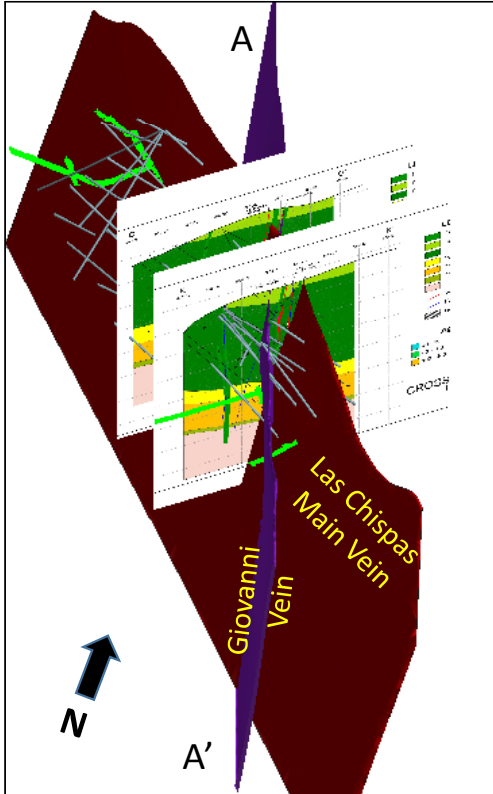
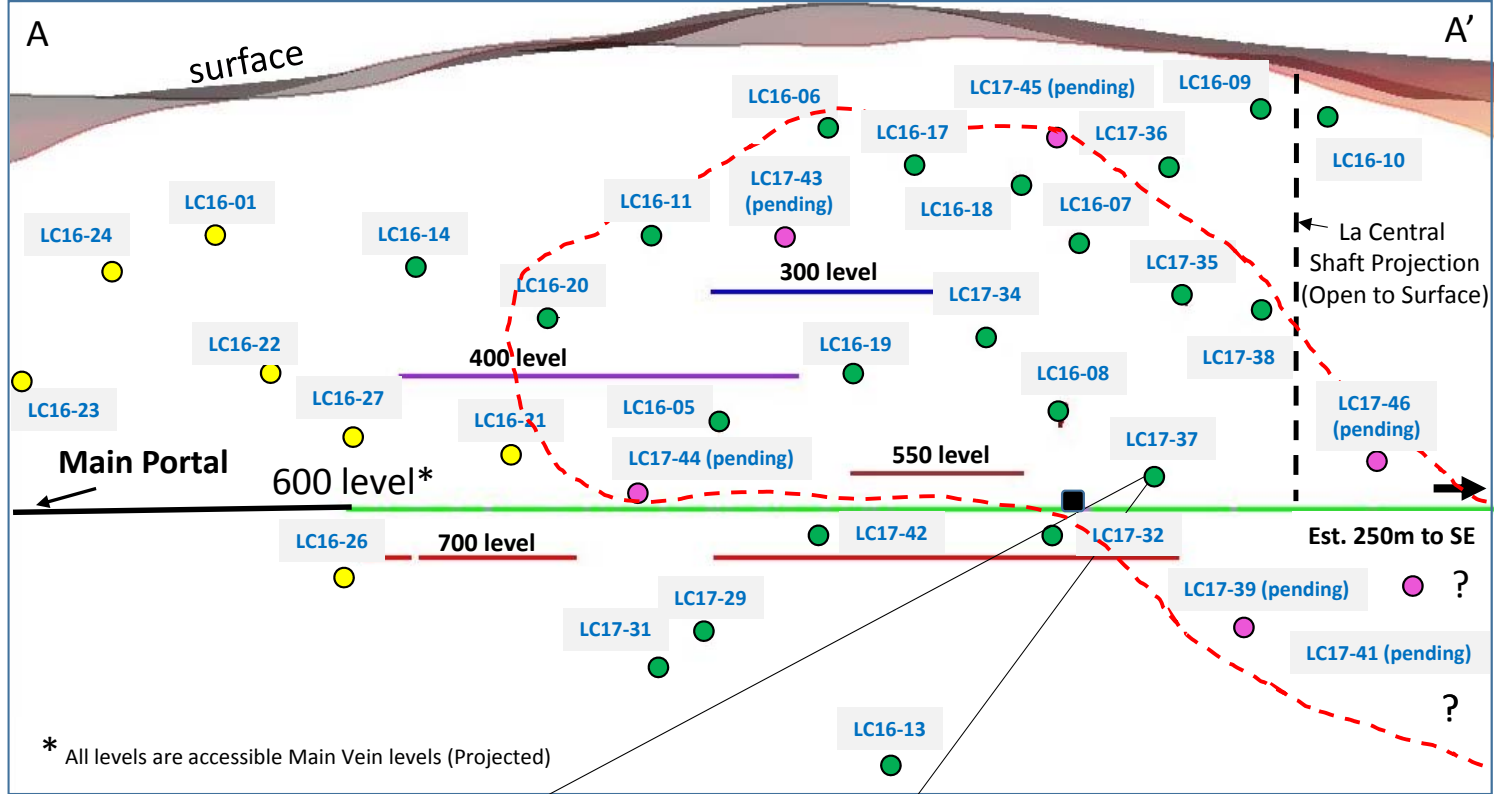


3D View w/X Sections



Giovanni Vein Long Section (Looking East)



\* All levels are accessible Main Vein levels (Projected)

- **Hole ID** All core hole numbers and Giovanni Vein pierce point (est.)
- Phase II Core hole pending
- Core hole piercing Las Chispas Main Vein and not Giovanni Vein
- Est. Grade Contour @ > 250 gpt AgEq
- Drill Hole Trace
- Dolores U/G Portal and Adit (to west est. 230m)

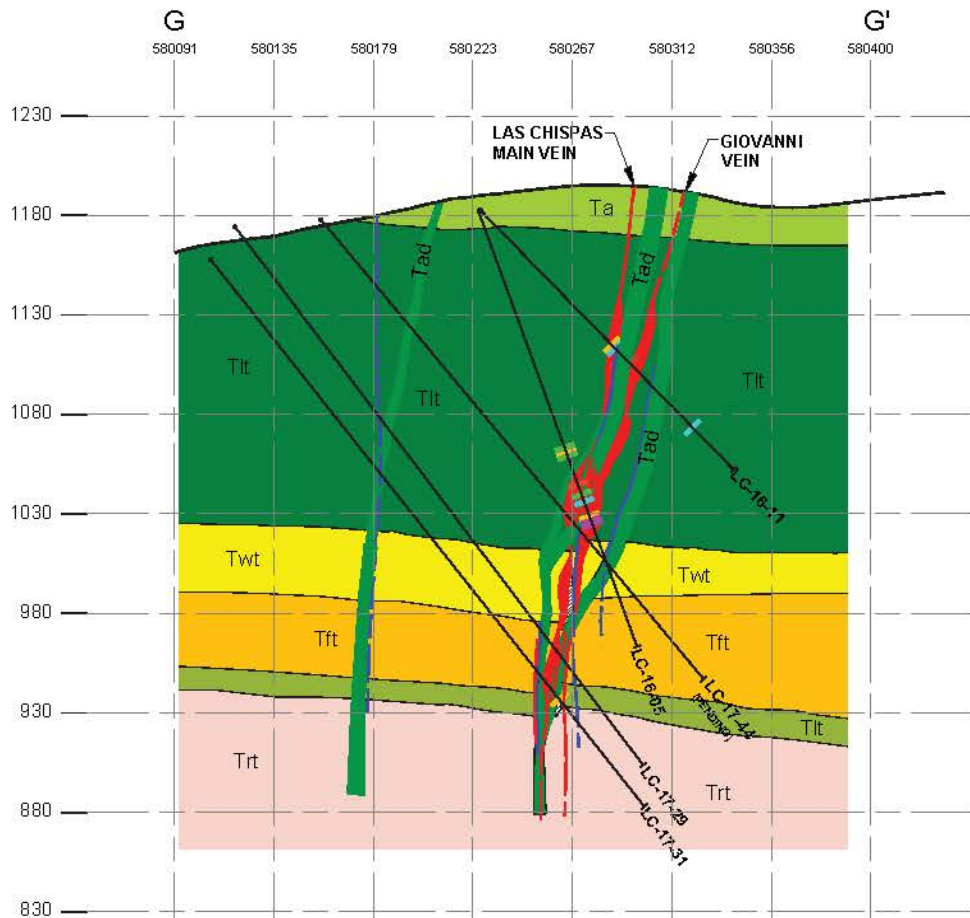


Hole LC17-37; 2.3m @ 845 AgEq\*\*

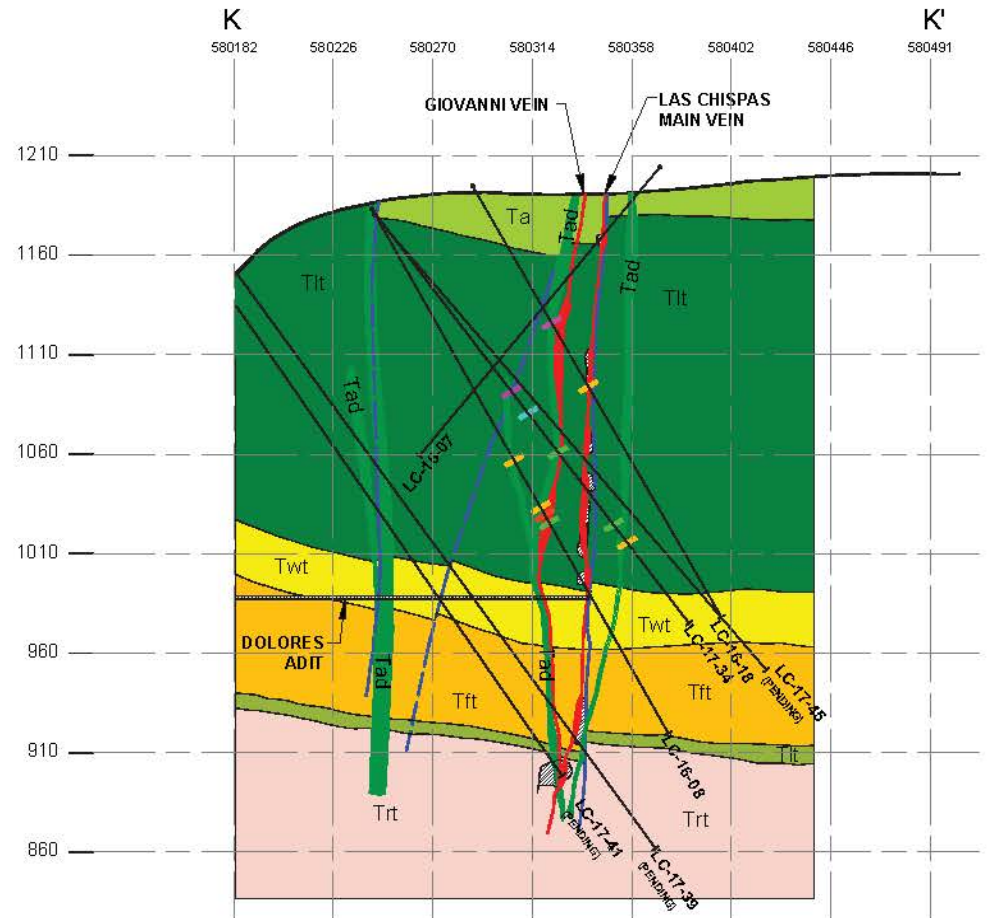


0m 100m

\*\*75 (Ag):1 (Au) ratio for AgEq



CROSS SECTION G-G'



CROSS SECTION K-K'

**LEGEND**

- |                     |                     |                            |          |
|---------------------|---------------------|----------------------------|----------|
| Tad - ANDESITE DIKE | Twt - WELDED TUFF   | Trt - RHYOLITE TUFF        | UG Works |
| Ta - ANDESITE       | Tft - FLUIDAL TUFF  | Vein, Stockwork or Breccia | Fault    |
| Tlt - LITHIC TUFF   | Tlt - LITHIC TUFF 2 |                            |          |

**AgEq gpt**

- |           |             |        |
|-----------|-------------|--------|
| 30 - 60   | 300 - 500   | > 2000 |
| 60 - 100  | 500 - 1000  |        |
| 100 - 300 | 1000 - 2000 |        |

**Looking North**

