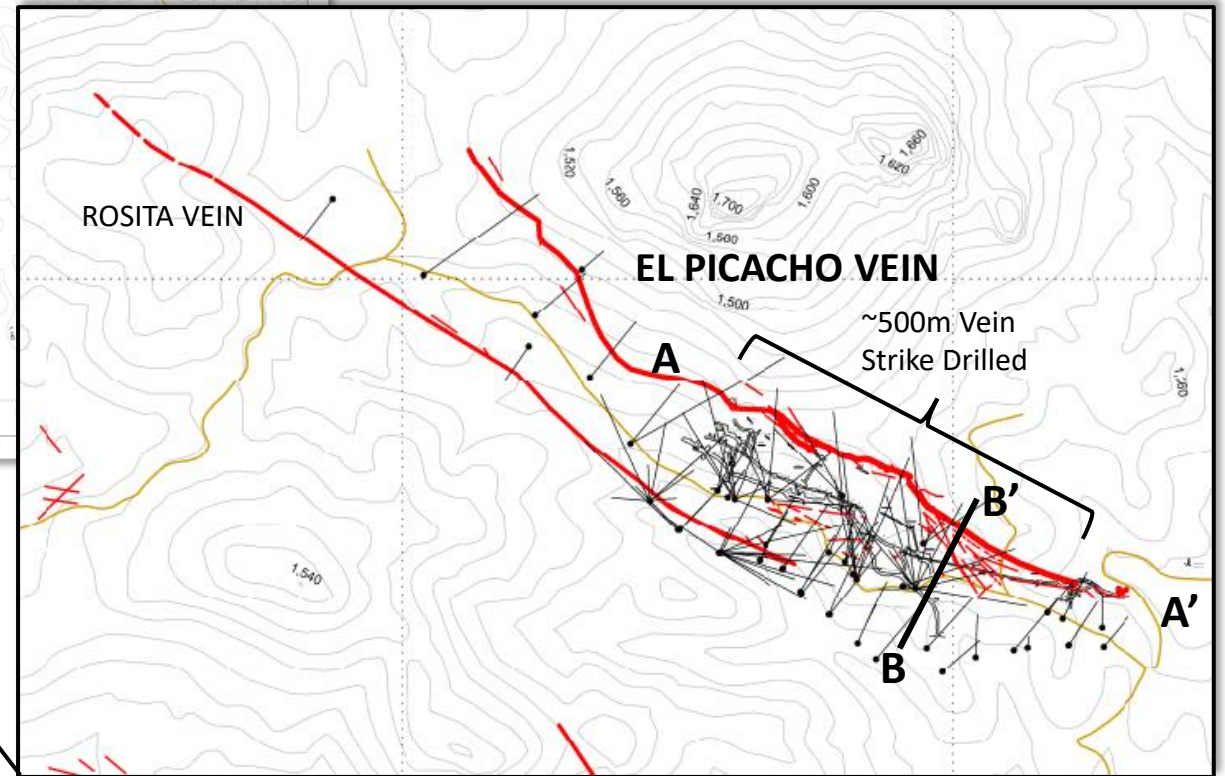
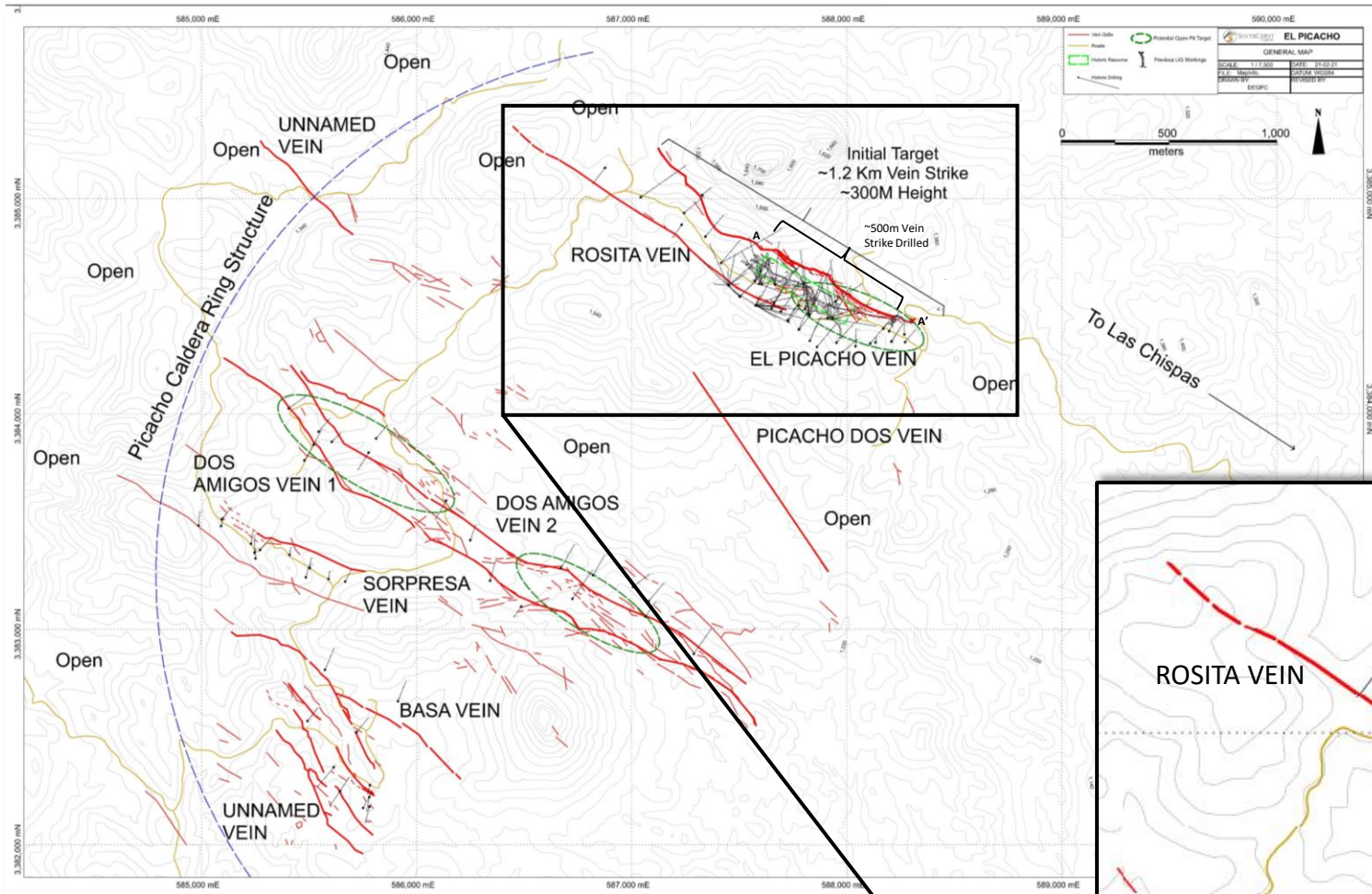


El Picacho District Plan Map

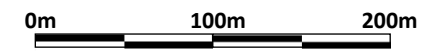
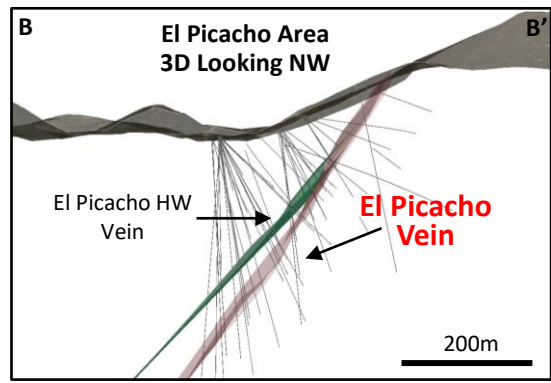
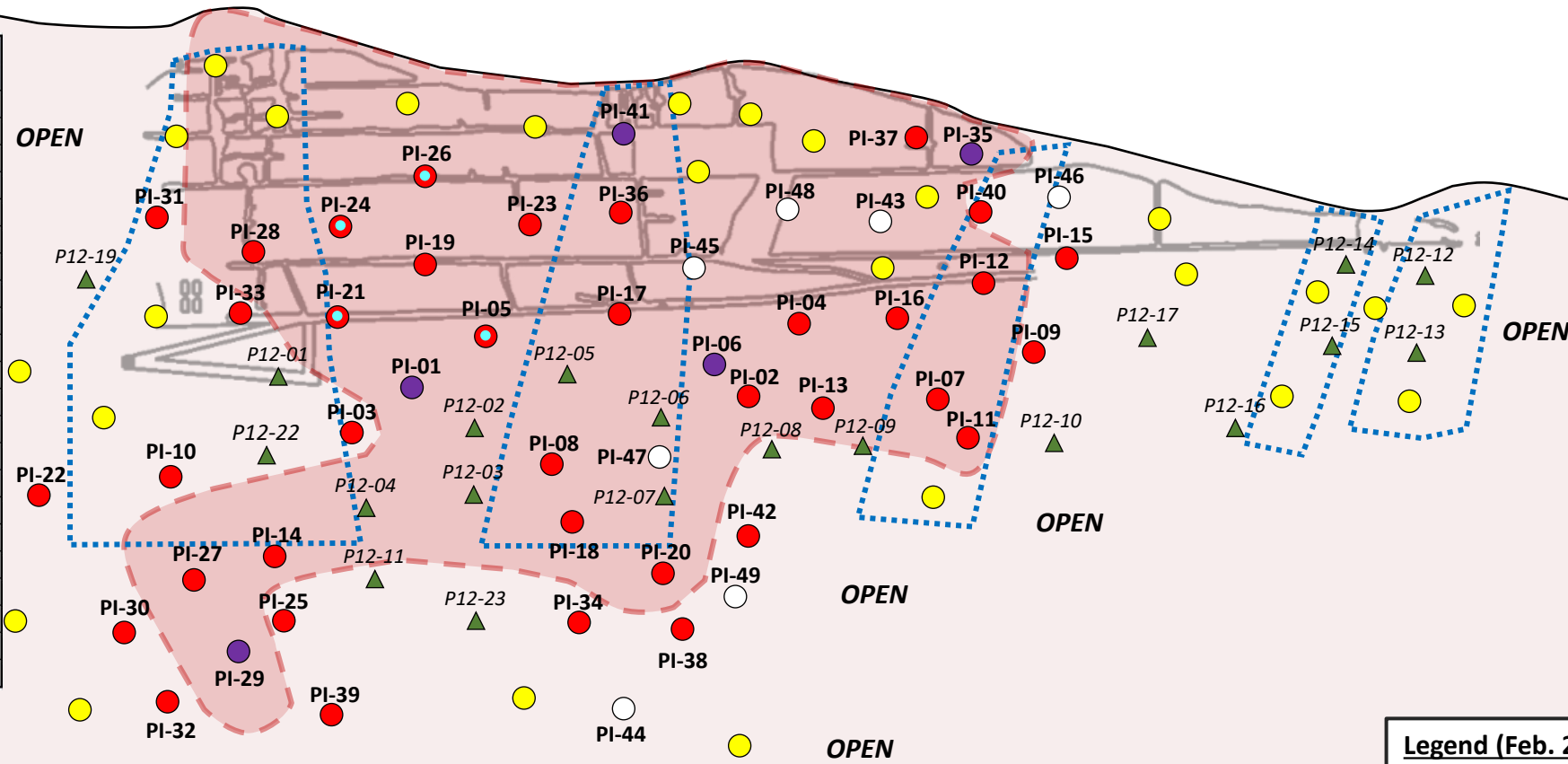


Long Section (Inclined) of El Picacho Vein Looking Northeast

A

A'

Hole	From (m)	To (m)	Length (m)	Est. True Width (m)	AgEq* (gpt)
PI-20-001	120.9	142.5	21.6	16.4	689
PI-20-002	161.1	172.3	11.2	9.0	303
PI-20-005	116.9	119.1	2.2	1.8	441
PI-20-006	161.6	170.6	9.0	7.3	3,297
PI-20-007	144.9	146.1	1.2	0.7	158
PI-20-012	68.9	73.6	4.7	4.0	278
PI-20-013	181.4	193.2	11.8	6.7	234
PI-20-014	241.1	242.7	1.6	1.1	207
PI-20-016	133.4	134.7	1.3	1.0	152
PI-20-017	114.6	120.2	5.6	3.5	163
PI-20-018	210.0	212.0	2.0	1.5	156
PI-20-019	80.6	88.1	7.5	5.9	361
PI-20-020	246.3	248.7	2.4	1.5	296
PI-20-021	119.3	121.1	1.9	1.6	270
PI-20-024	104.1	116.7	12.6	6.9	186
PI-21-026	82.9	88.3	5.4	4.3	183
PI-21-027	263.9	265.2	1.3	0.8	244
PI-21-029	288.8	293.8	5.0	2.7	1,002
PI-21-035	7.0	12.5	5.5	5.0	615
PI-21-036	54.4	56.6	2.2	1.4	156
PI-21-041	41.0	43.6	2.6	2.0	1,238
Weighted Average			5.6	4.1	660



*AgEq based on 75 (Ag):1 (Au) calculated using long-term silver and gold prices of US\$20 per ounce silver and US\$1,500 per ounce gold. Insufficient metallurgical test work has been completed at Picacho to formulate accurate recoveries.

All information is approximate.
Note: NR = this news release

Legend (Feb. 2021)

- Current NR Reported DH
- >500 gpt AgEq*
- Proposed DH
- Assays Pending
- ● Void in DH
- ▲ Historic Yamana DH's
- ⋯ Historic Yamana HG Footprint
- ⋯ HG Footprint (Includes HW Vein)
- Historic UG Workings