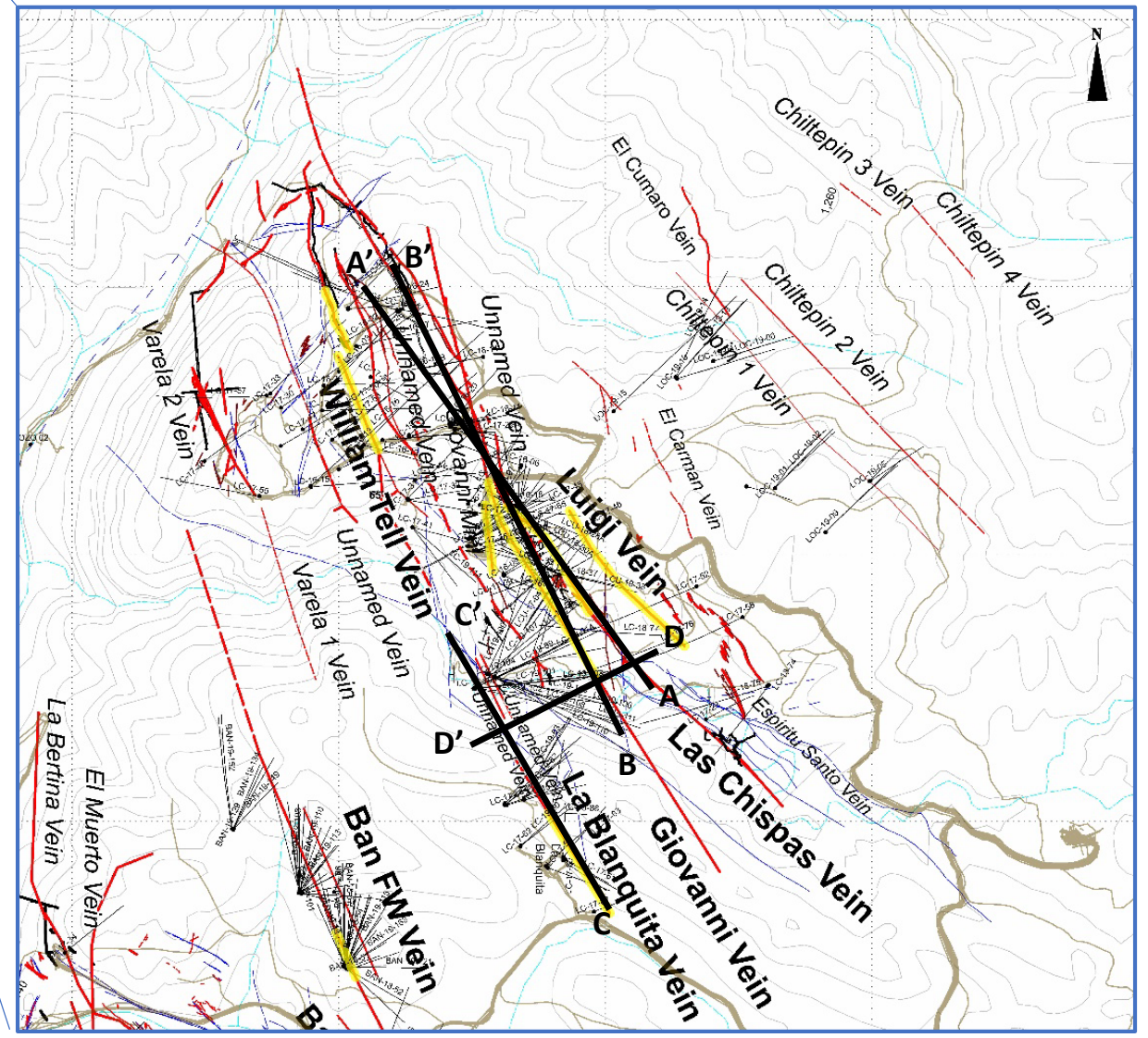


# Las Chispas Area Plan Map

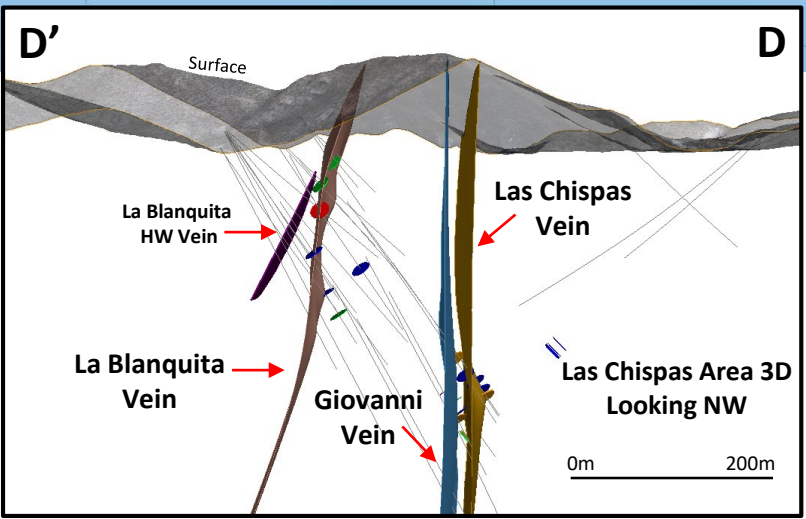
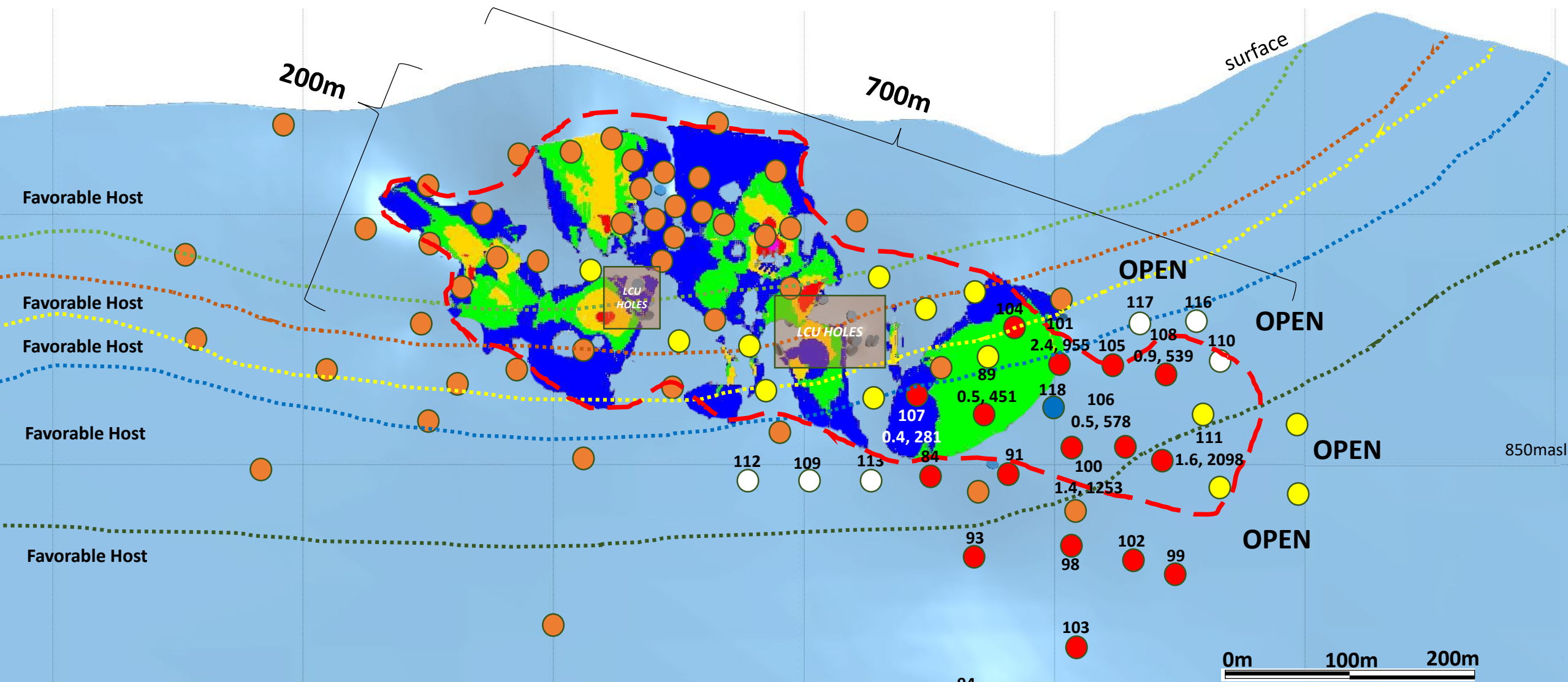
## October 2019



# Long Section (Inclined) of Giovanni Vein Looking Northeast

B'

B



LC19-111: 1.6m @ 2,098 gpt AgEq\*

**AgEq (gpt) Blocks**

Grey	< 150
Blue	150 - 300
Green	300 - 500
Yellow	500 - 1000
Red	1000 - 2000
Purple	2000 - 5000
Dark Purple	> 5000

\*AgEq based on 75 (Ag):1 (Au) calculated using long-term silver and gold prices of US\$18.50 per ounce silver and US\$1,225 per ounce gold, with average metallurgical recoveries of 86.6% silver and 98.9% gold.

**Legend (Oct. 2019)**

- Red circle: Current NR Reported DH
- Blue circle: Currently Drilling
- Yellow circle: Proposed DH
- White circle: Assays Pending
- Orange circle: Completed DH Pierce pt.
- Red dashed line: High-grade Footprint
- Colorful map icon: Feb. 8, 2019 AgEq Computer Gen. Block Model

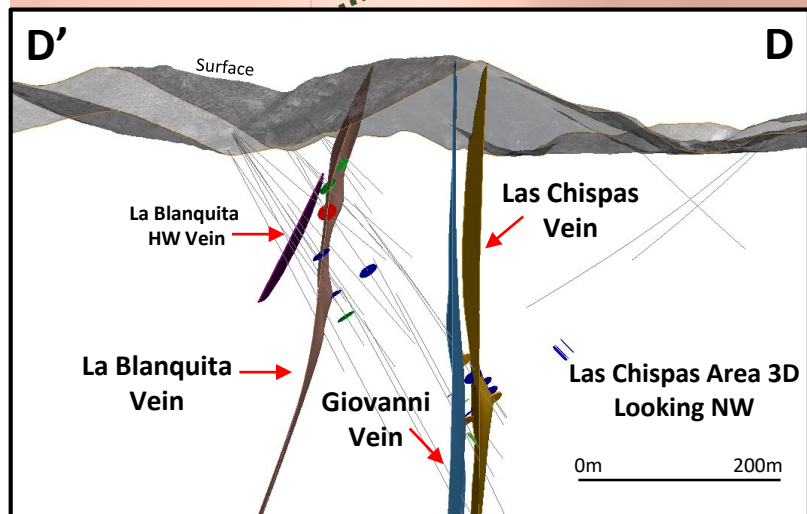
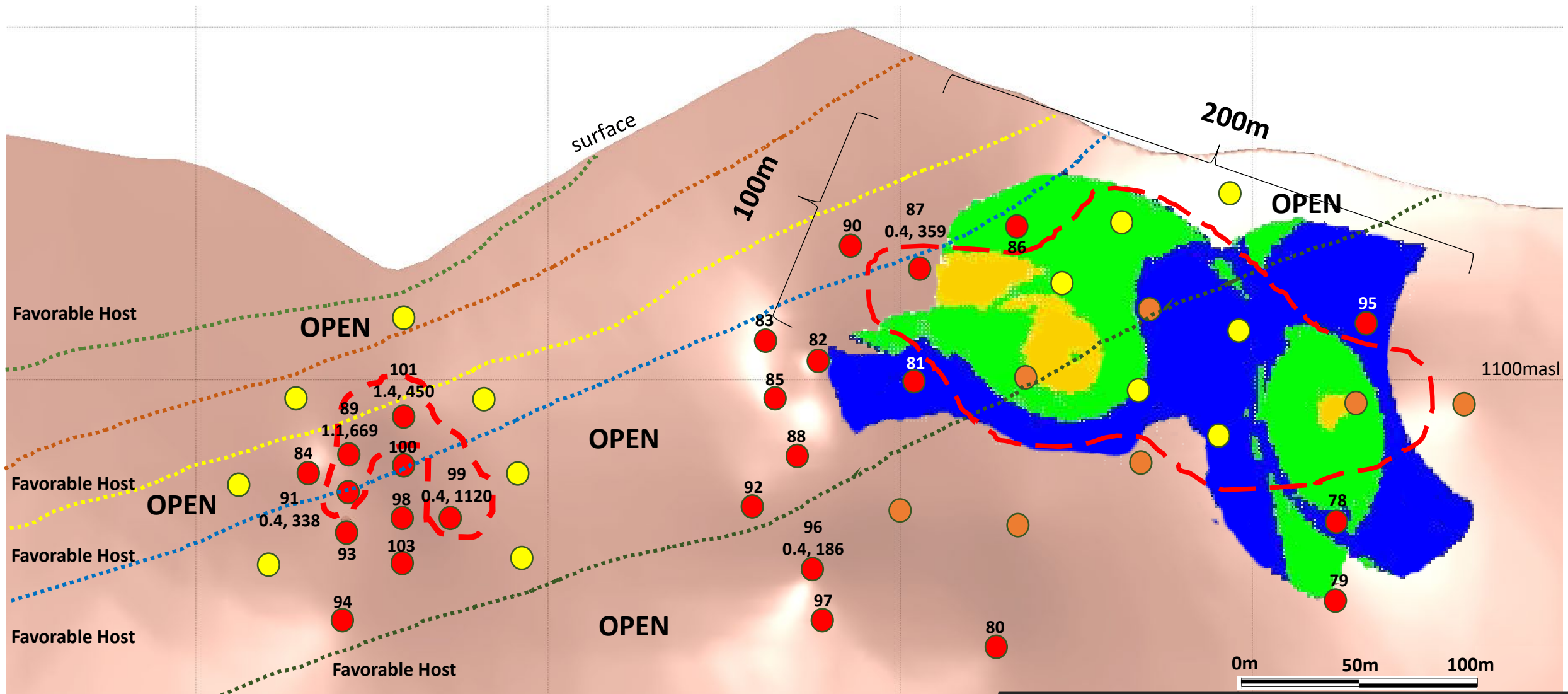
Drill hole #  
True Width, gpt AgEq\*

101
2.4, 955

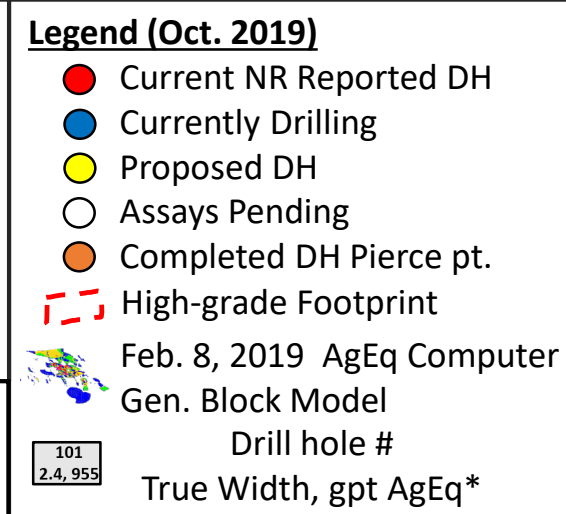
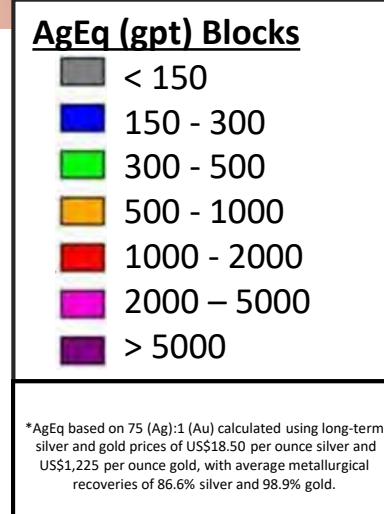
# Long Section (Inclined) of La Blanquita Vein Looking Northeast

C'

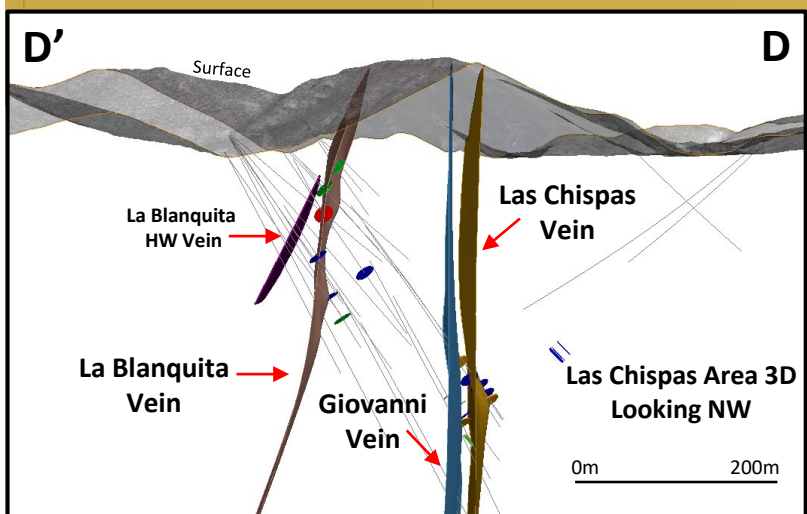
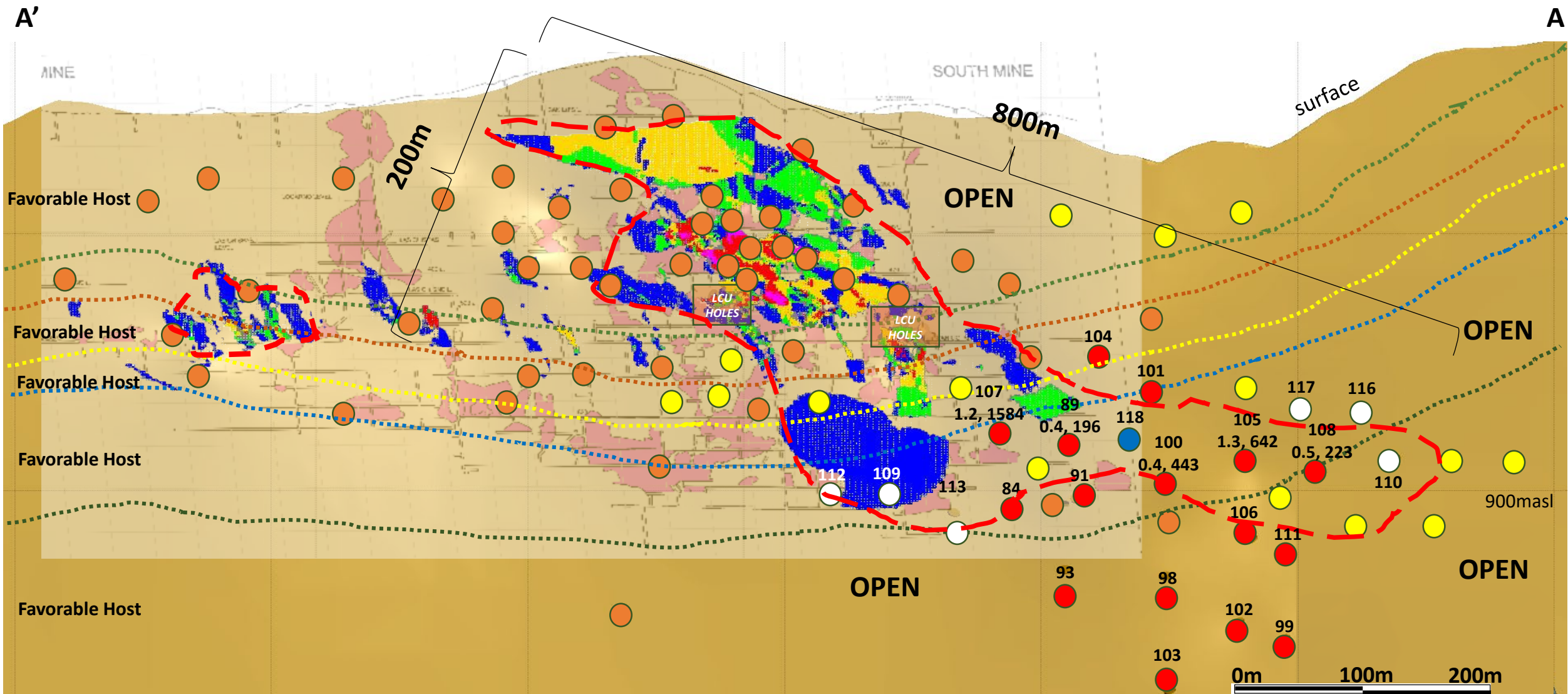
C



LC19-101: 1.4m @ 450 gpt AgEq\*



# Long Section (Inclined) of Las Chispas Vein Looking Northeast (Historic Workings in Pink)



LC19-107: 1.2m @  
1,584 gpt AgEq\*

