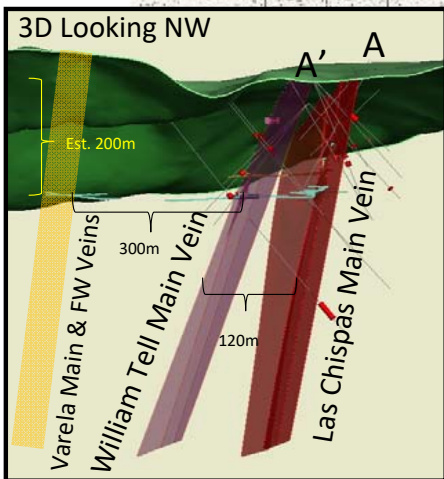
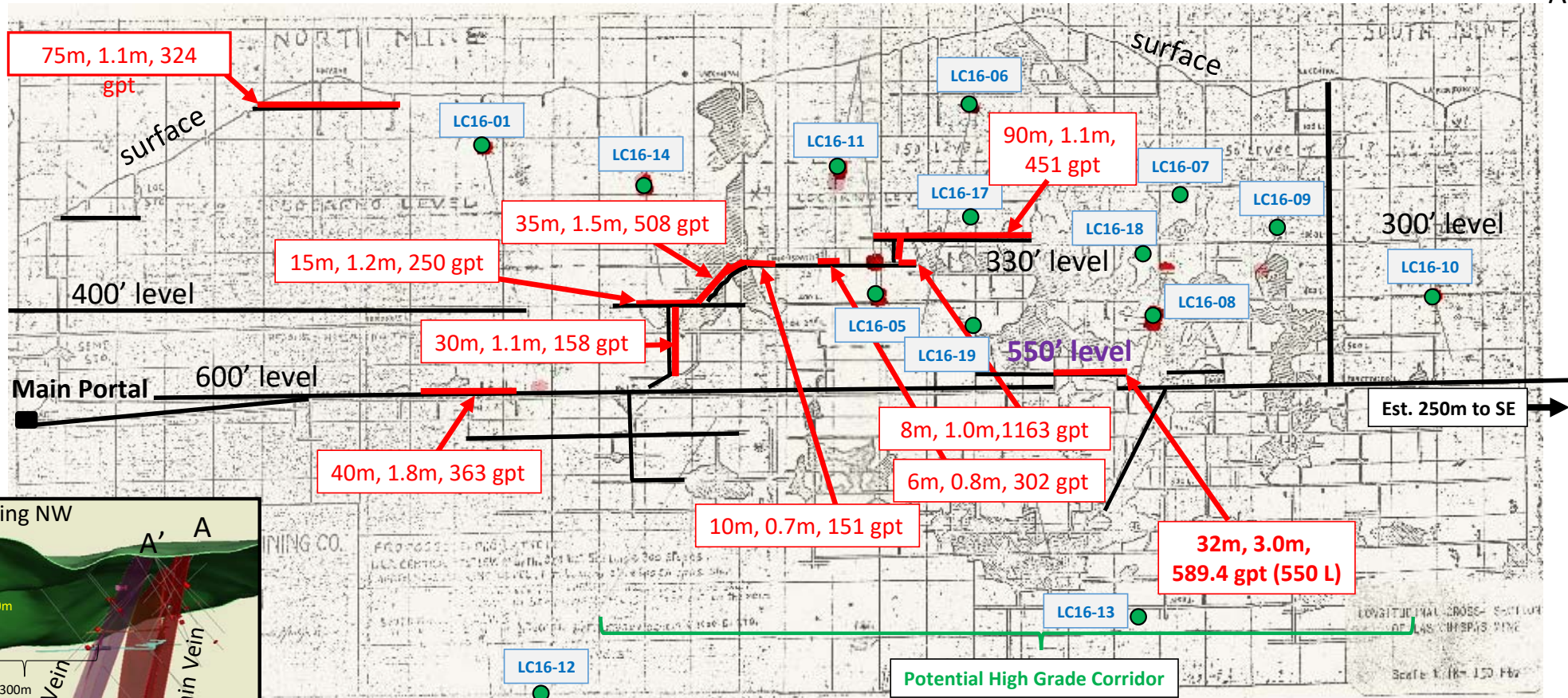


Las Chispas Main Vein Long Section with Historic Workings & Recent Exploration (Looking East)

A

A'



35m, 1.5m, 508 gpt	U/G Channel Sample; Strike Length (m), Width (m), W.Ave. AgEq. gpt*
—	Accessible (January 15, 2017)
—	> 150 gpt AgEq* (January 15, 2017)
Hole ID	
●	Core hole number and vein pierce point (est.)

*75 (Ag):1 (Au) ratio for AgEq

