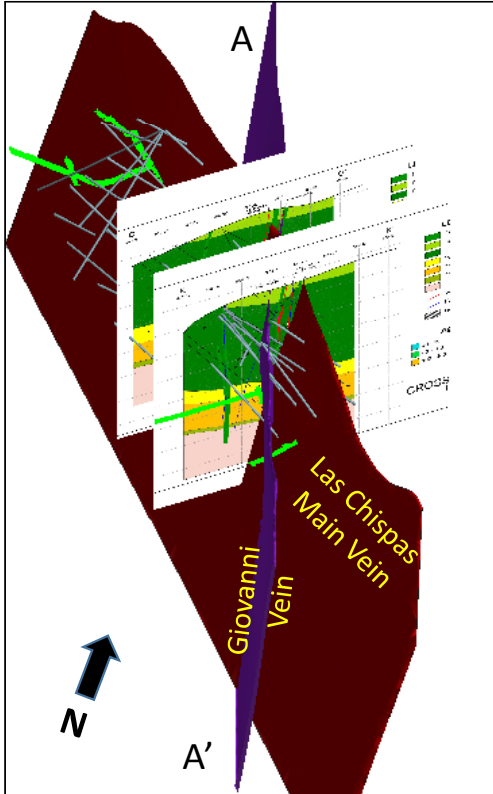
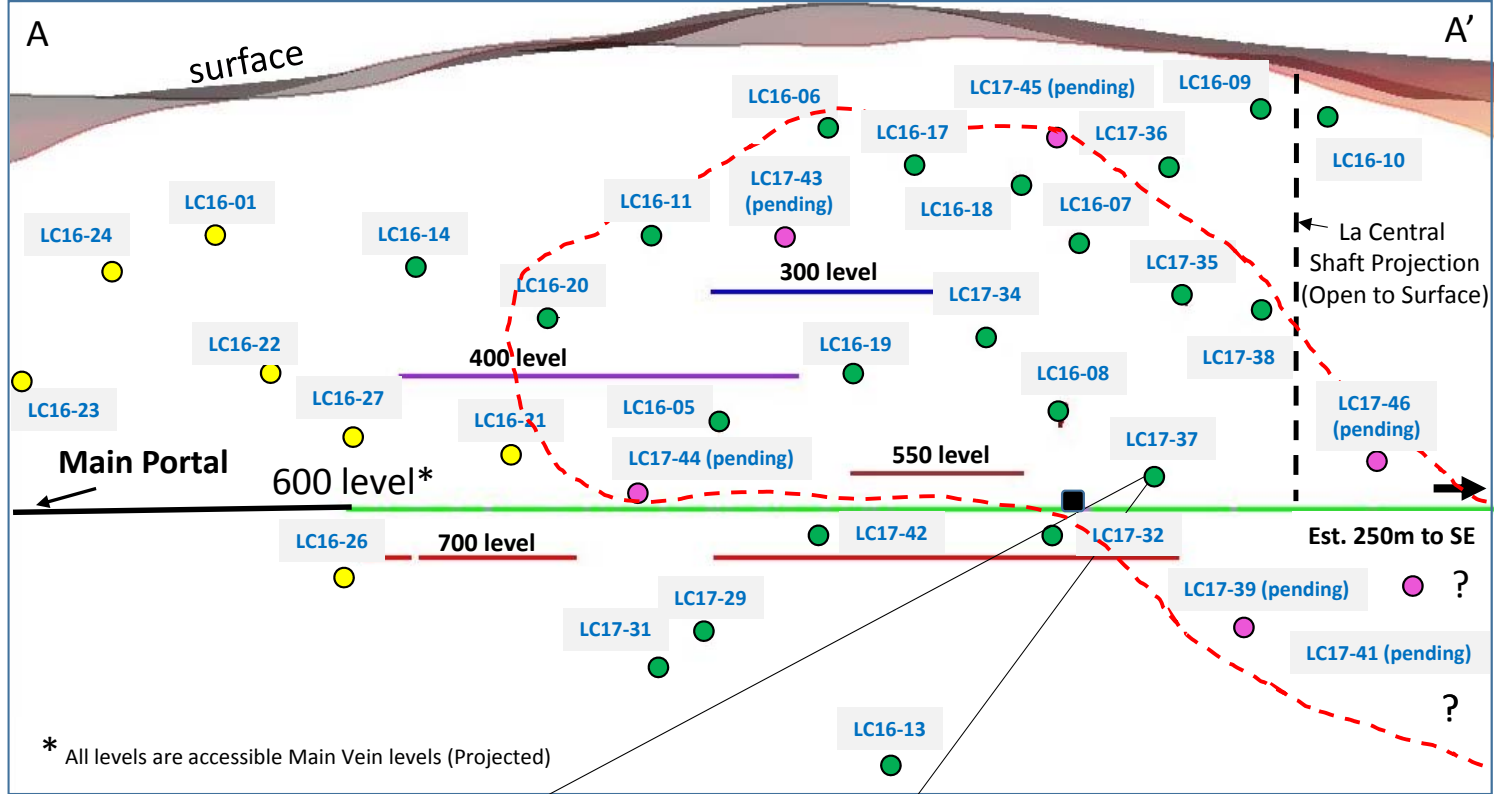


3D View w/X Sections



Giovanni Vein Long Section (Looking East)



- **Hole ID** All core hole numbers and Giovanni Vein pierce point (est.)
- Phase II Core hole pending
- Core hole piercing Las Chispas Main Vein and not Giovanni Vein
- - - Est. Grade Contour @ > 250 gpt AgEq
- Drill Hole Trace
- Dolores U/G Portal and Adit (to west est. 230m)



Hole LC17-37; 2.3m @ 845 AgEq**



0m 100m

**75 (Ag):1 (Au) ratio for AgEq