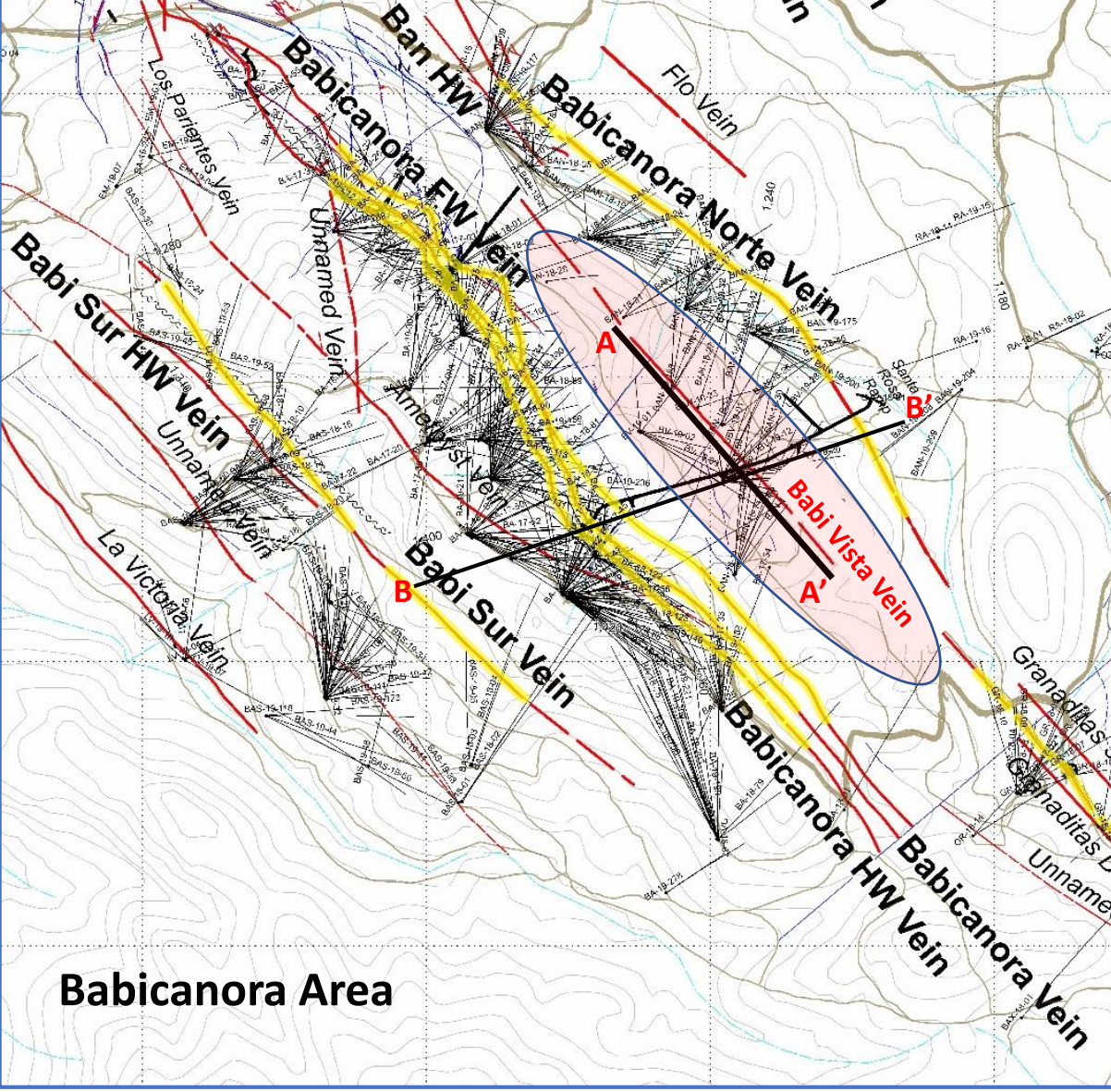
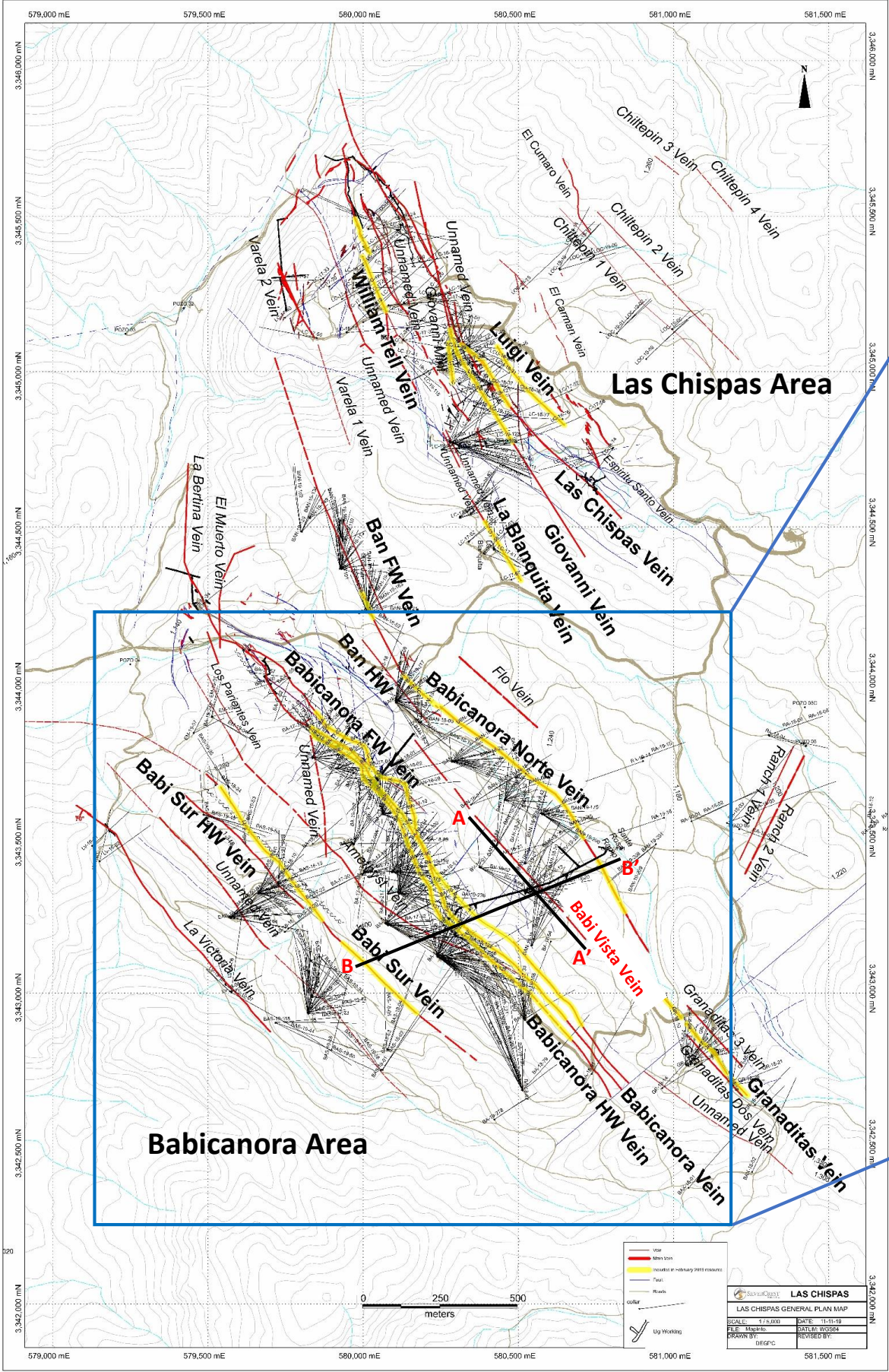


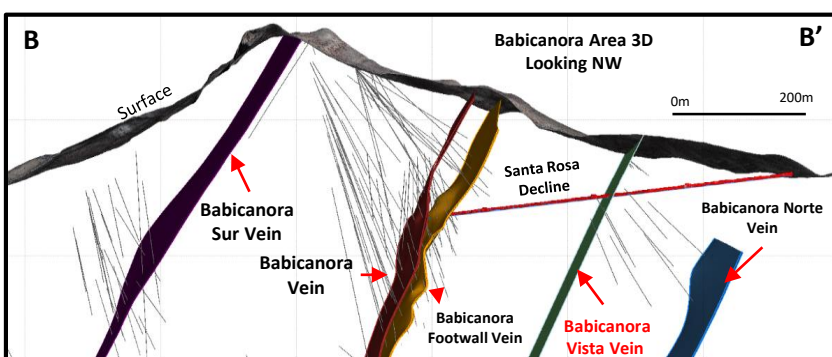
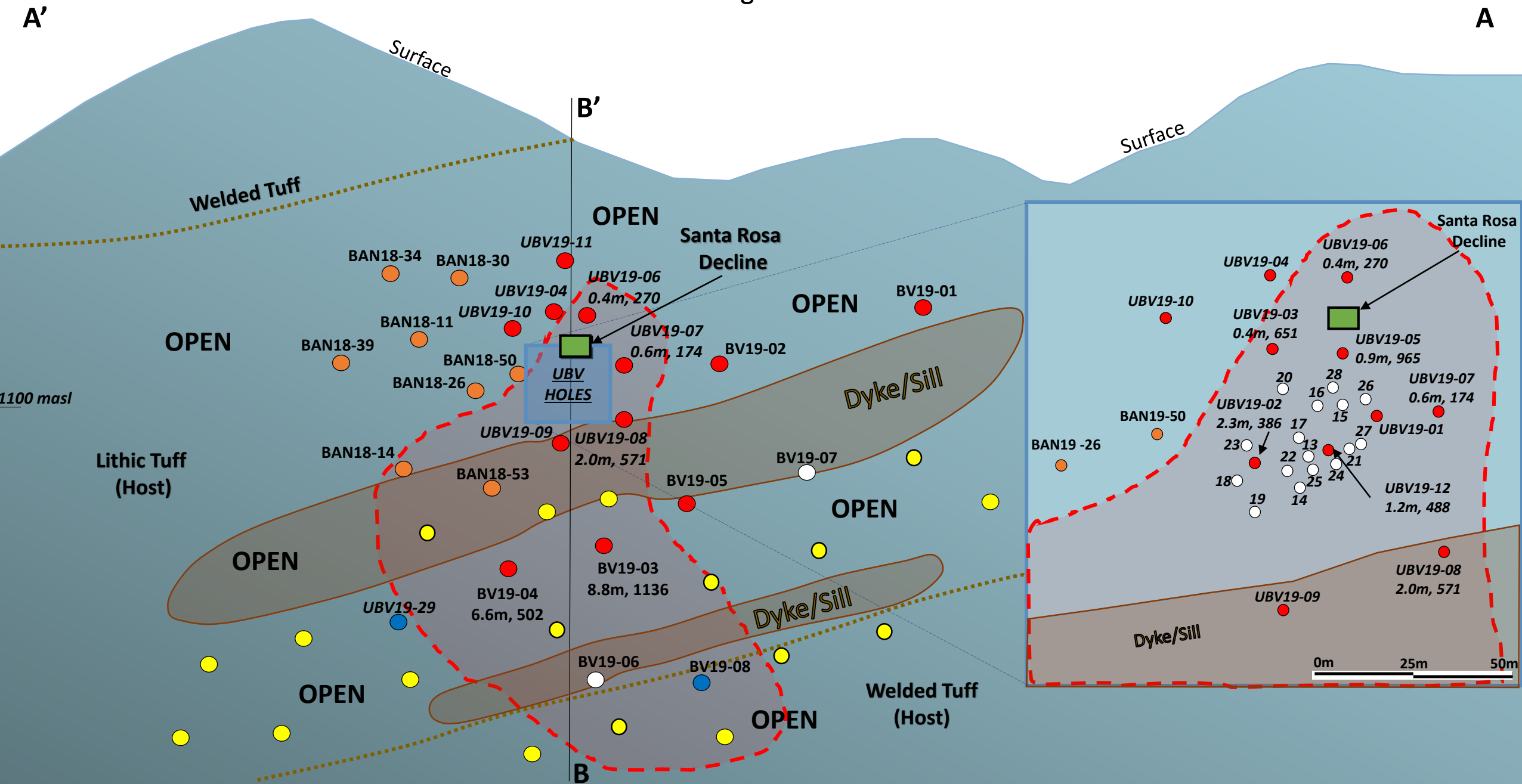
# Las Chispas District Plan Map November 2019



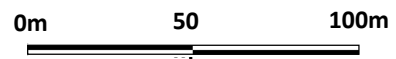
 Area for today's news



# Long Section (Inclined) of Babi Vista Vein Looking Southwest



**BV19-03: 0.3m @ 120.5 gpt Au and 9,510.0 gpt Ag, or 18,547 gpt AgEq\***



\*AgEq based on 75 (Ag):1 (Au) calculated using long-term silver and gold prices of US\$17.00 per ounce silver and US\$1,225 per ounce gold, with average metallurgical recoveries of 90% silver and 95% gold.

**Legend (Nov. 2019)**

- Current NR Reported DH
- Currently Drilling
- Proposed DH
- Assays Pending
- Completed DH Pierce pt.
- High Grade Footprint
- Underground Workings

Drill hole #	True Thickness, gpt AgEq*
BV19-03	8.8m, 1136

All information is approximate.