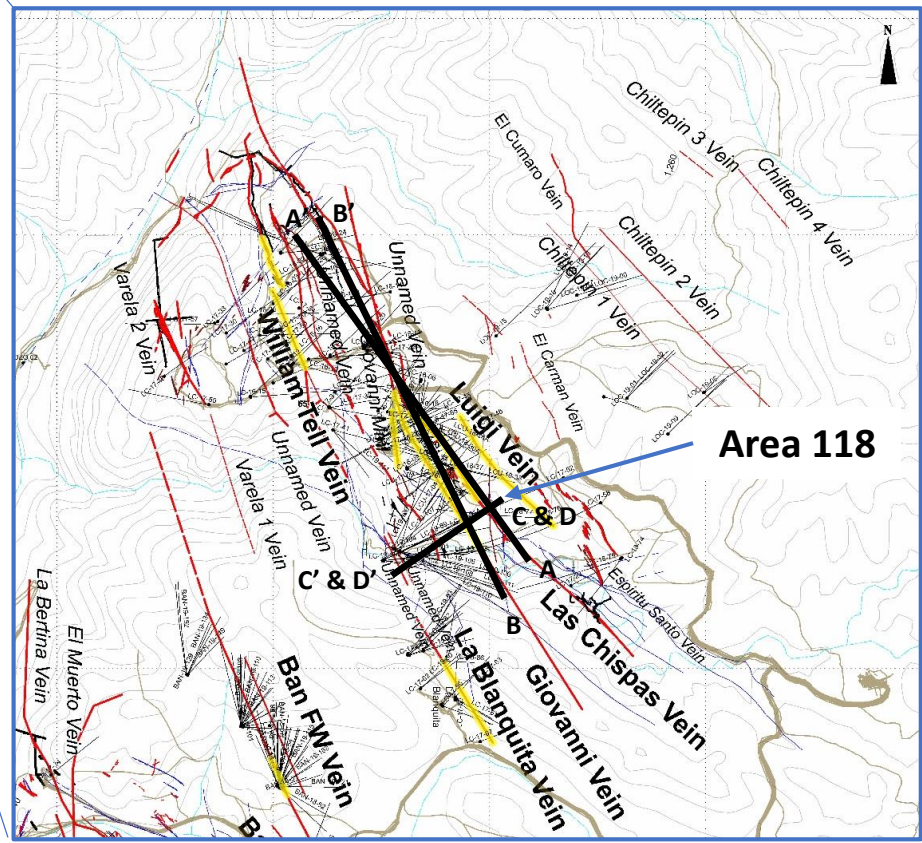
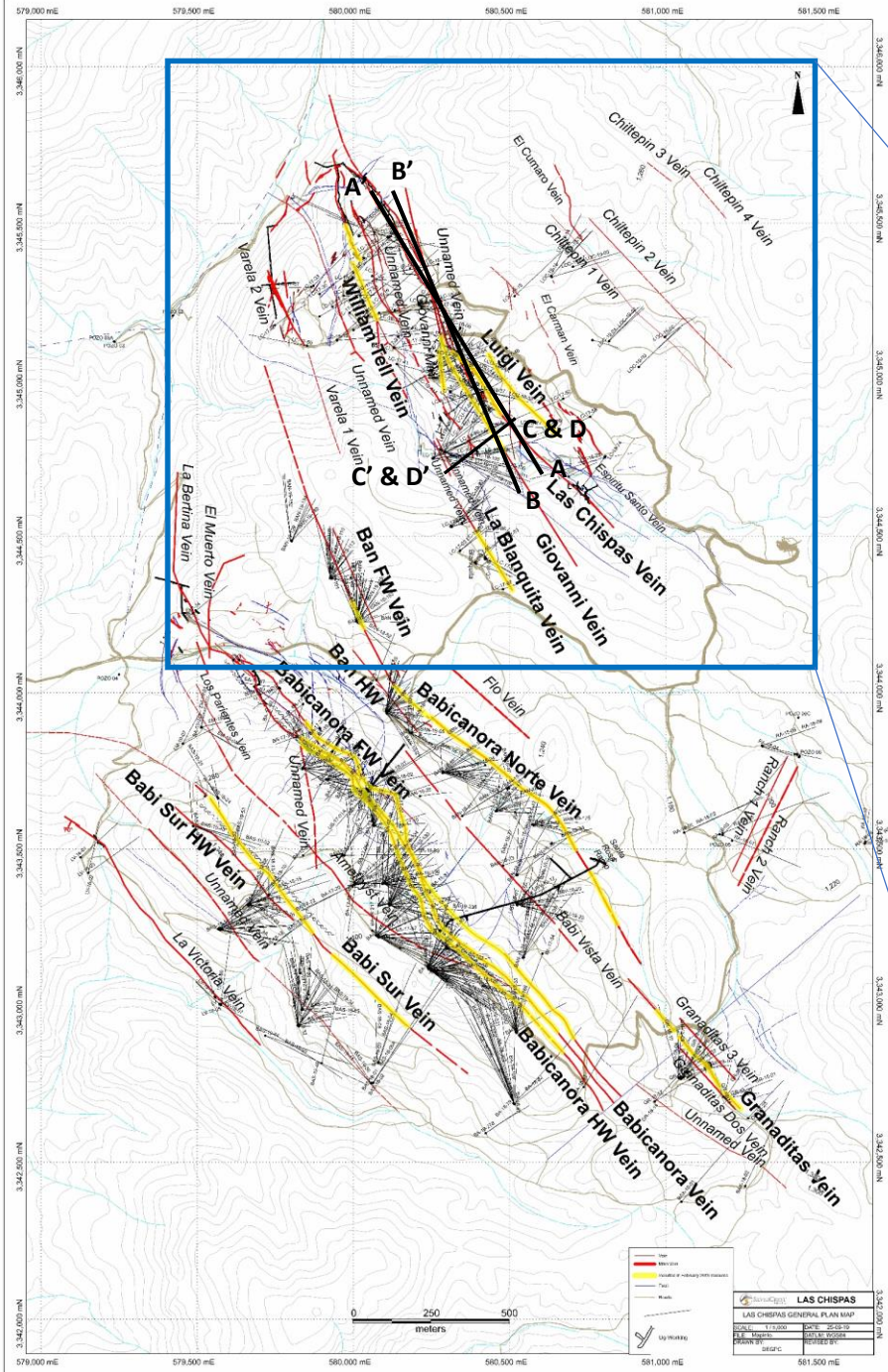


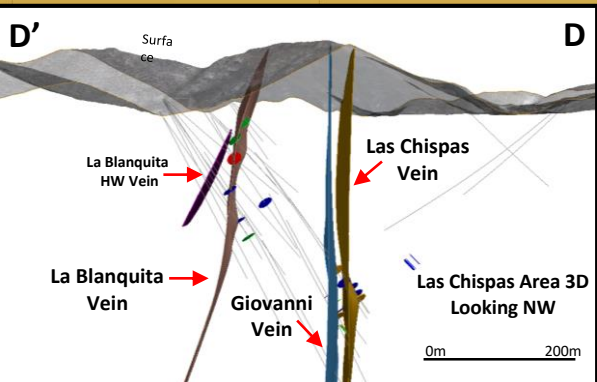
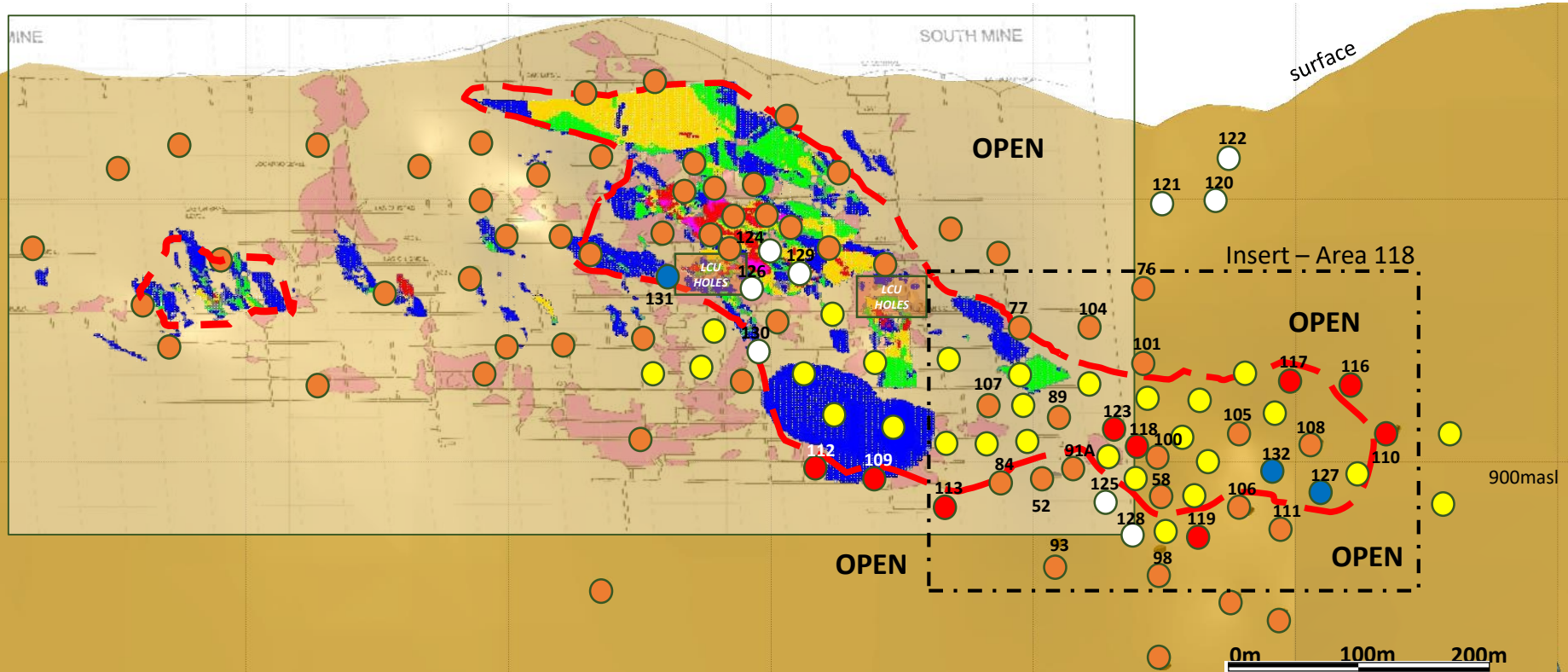
Las Chispas Area Plan Map with Area 118 November 2019



Long Section (Inclined) of Las Chispas Vein Looking Northeast (Historic Workings in Pink)

A'

A



LC19-118: 8.6m @ 7,873 gpt AgEq*

AgEq (gpt) Blocks	
	< 150
	150 - 300
	300 - 500
	500 - 1000
	1000 - 2000
	2000 - 5000
	> 5000

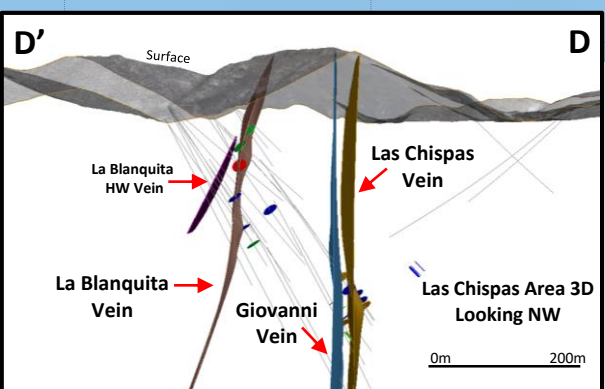
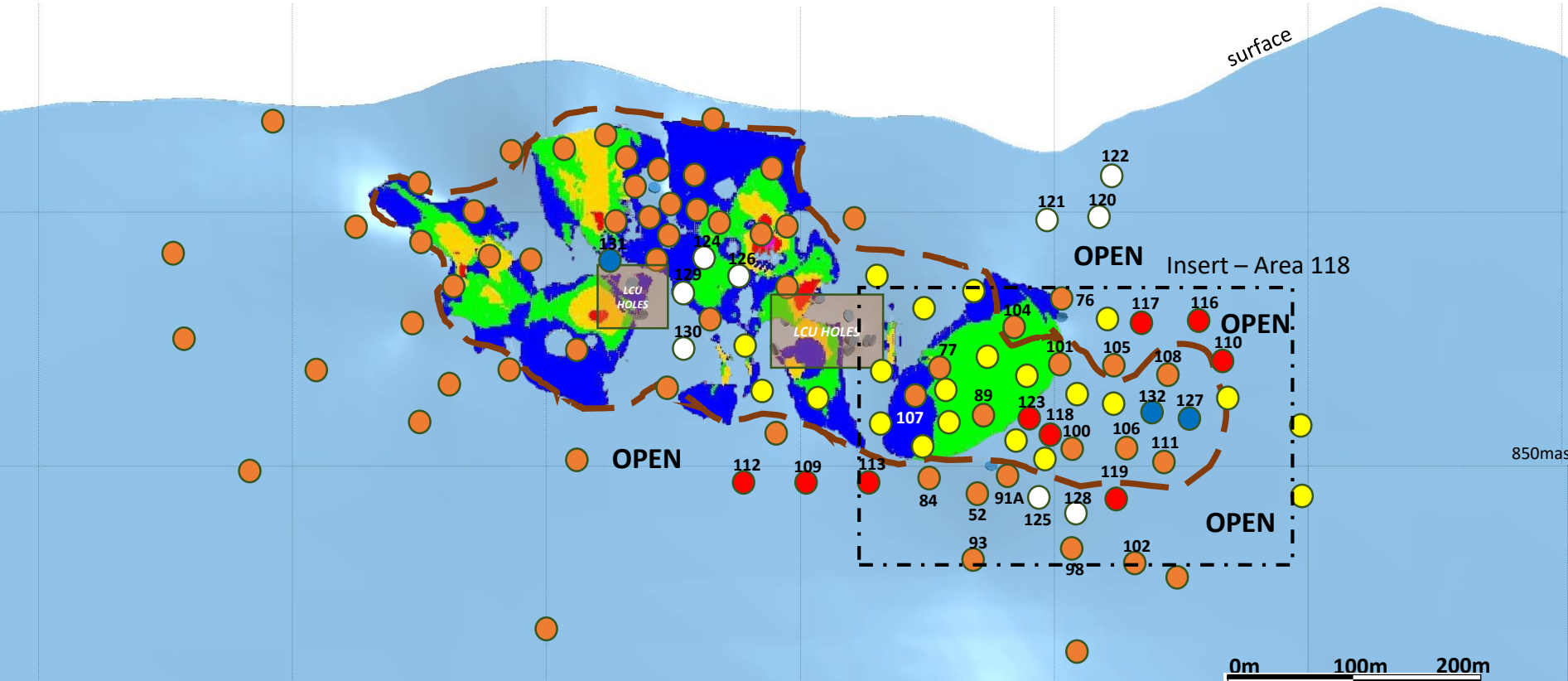
*AgEq based on 75 (Ag):1 (Au) calculated using long-term silver and gold prices of US\$18.50 per ounce silver and US\$1,225 per ounce gold, with average metallurgical recoveries of 86.6% silver and 98.9% gold.

Legend (Nov. 2019)	
	Current NR Reported DH
	Currently Drilling
	Proposed DH
	Assays Pending
	Completed DH Pierce pt.
	High-grade Footprint
	Feb. 8, 2019 AgEq Computer Gen. Block Model
101	Drill hole #
2,4,955	True Width, gpt AgEq*

Long Section (Inclined) of Giovanni Vein Looking Northeast

B'

B



LC19-111: 1.6m @ 2,098 gpt AgEq*

AgEq (gpt) Blocks	
	< 150
	150 - 300
	300 - 500
	500 - 1000
	1000 - 2000
	2000 - 5000
	> 5000

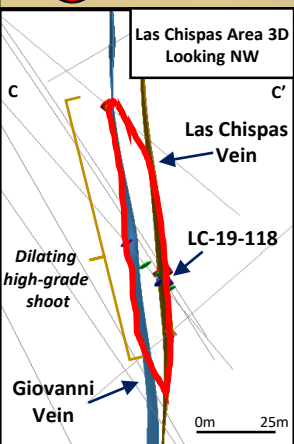
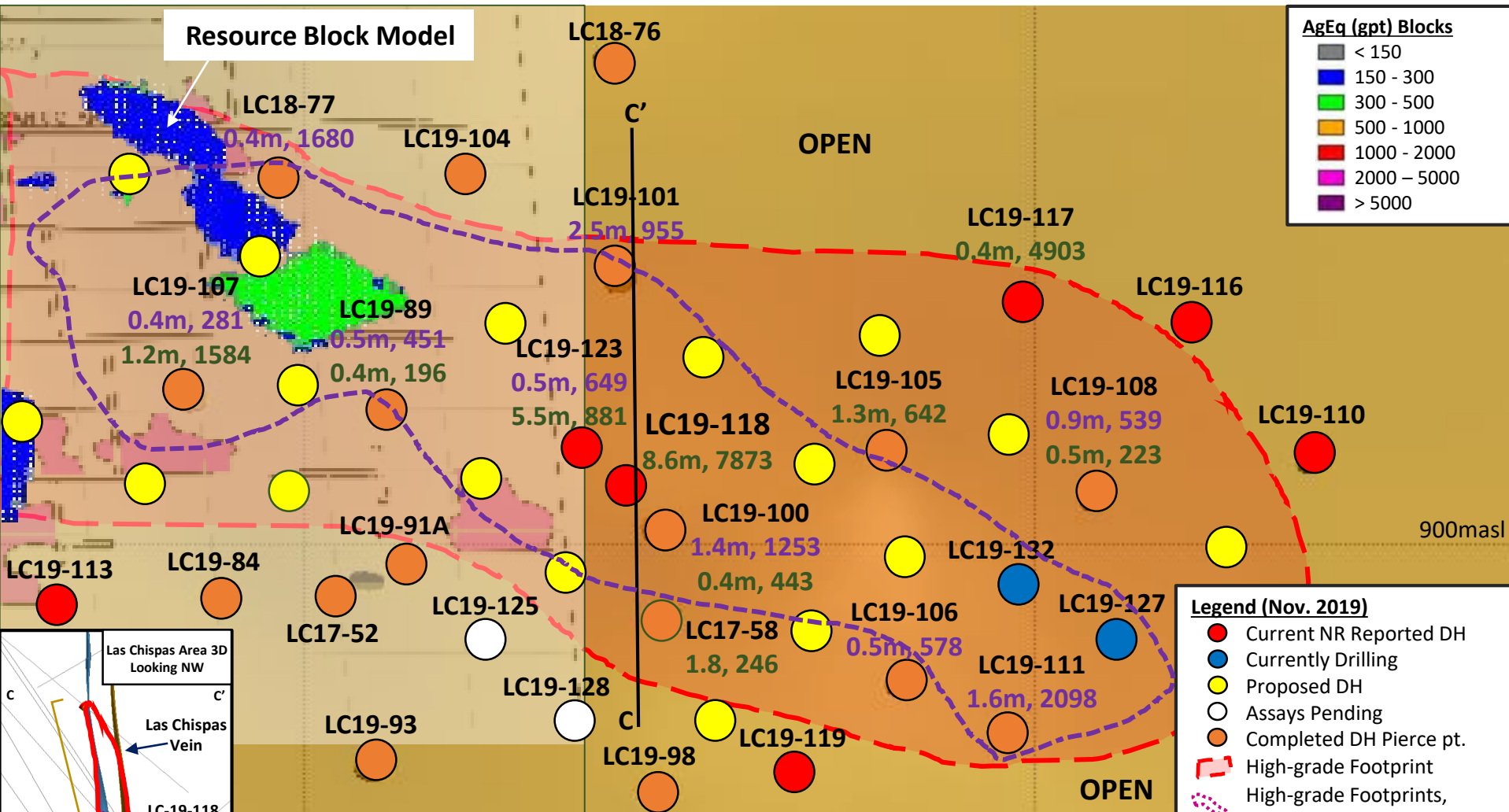
*AgEq based on 75 (Ag):1 (Au) calculated using long-term silver and gold prices of US\$18.50 per ounce silver and US\$1,225 per ounce gold, with average metallurgical recoveries of 86.6% silver and 98.9% gold.

Legend (Nov. 2019)	
	Current NR Reported DH
	Currently Drilling
	Proposed DH
	Assays Pending
	Completed DH Pierce pt.
	High-grade Footprint
	Feb. 8, 2019 AgEq Computer Gen. Block Model
	Drill hole #
	True Width, gpt AgEq*

Long Section (Inclined) of Area 118 Looking Northeast (Insert)

A'

A



LC19-118: 8.6m @ 44.3 gpt Au and 4,551.3 gpt Ag, or 7,873 gpt AgEq*



All information is approximate.

*AgEq based on 75 (Ag):1 (Au) calculated using long-term silver and gold prices of US\$18.50 per ounce silver and US\$1,225 per ounce gold, with average metallurgical recoveries of 86.6% silver and 98.9% gold.

Legend (Nov. 2019)

- Current NR Reported DH
- Currently Drilling
- Proposed DH
- Assays Pending
- Completed DH Pierce pt.
- High-grade Footprint
- High-grade Footprints, >1000 gpt AgEq*
- Feb. 8, 2019 AgEq Computer Gen. Block Model
- Drill hole # (Giovanni)
- Drill hole # (Las Chispas)
- True Width, gpt AgEq*

101
2,4,955