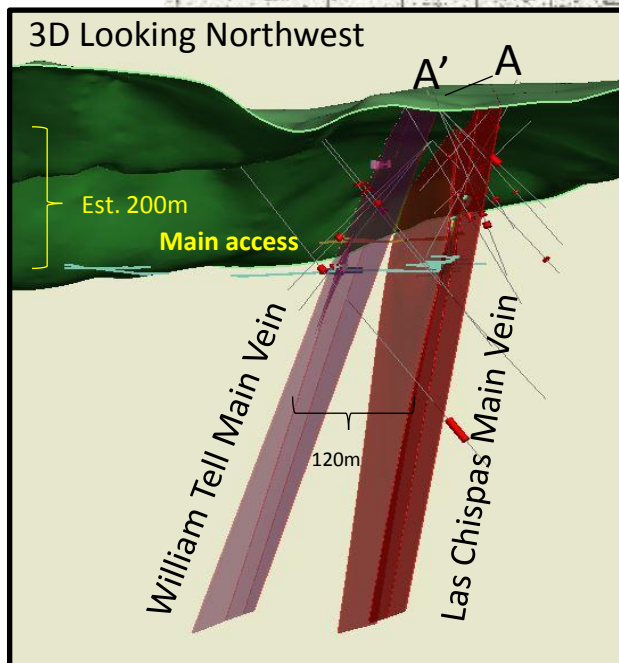
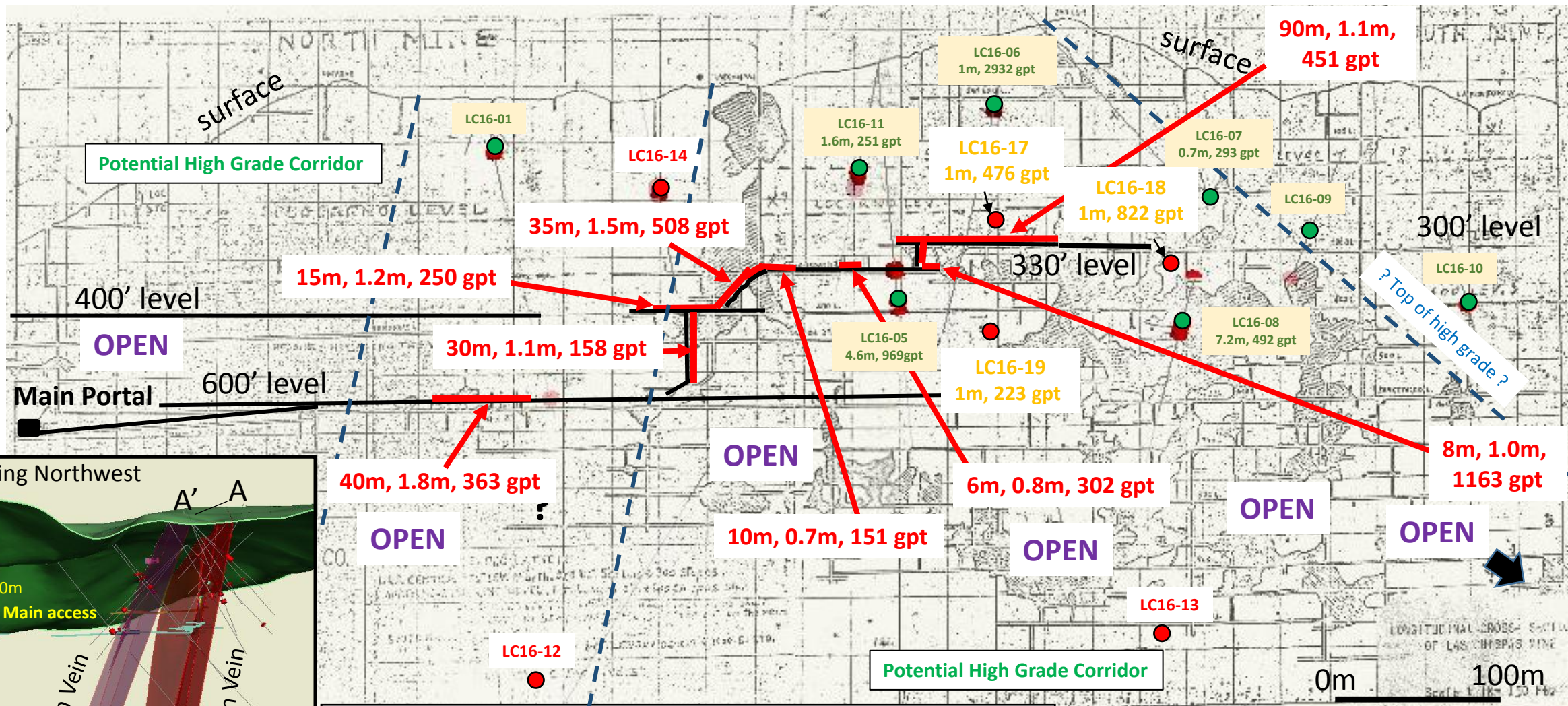


Summary of Las Chispas Main Vein Long Section with Historic Workings with Recent Exploration (Looking East)

A

A'



Hole ID

- Drill hole Intercept; Est. True Thickness (m), AgEq* gpt : Aug 2, 2016
- Drill hole Intercept: Est. True Thickness, AgEq* gpt (Sept. 14, 2016)
- Underground Accessible (August 31, 2016)
- > 150 gpt AgEq* Underground Channel Samples (July 15, 2016)
- - - Cross Cutting Fault

LC16-15

Potential High Grade Corridor

*75 (Ag):1 (Au) ratio for AgEq

