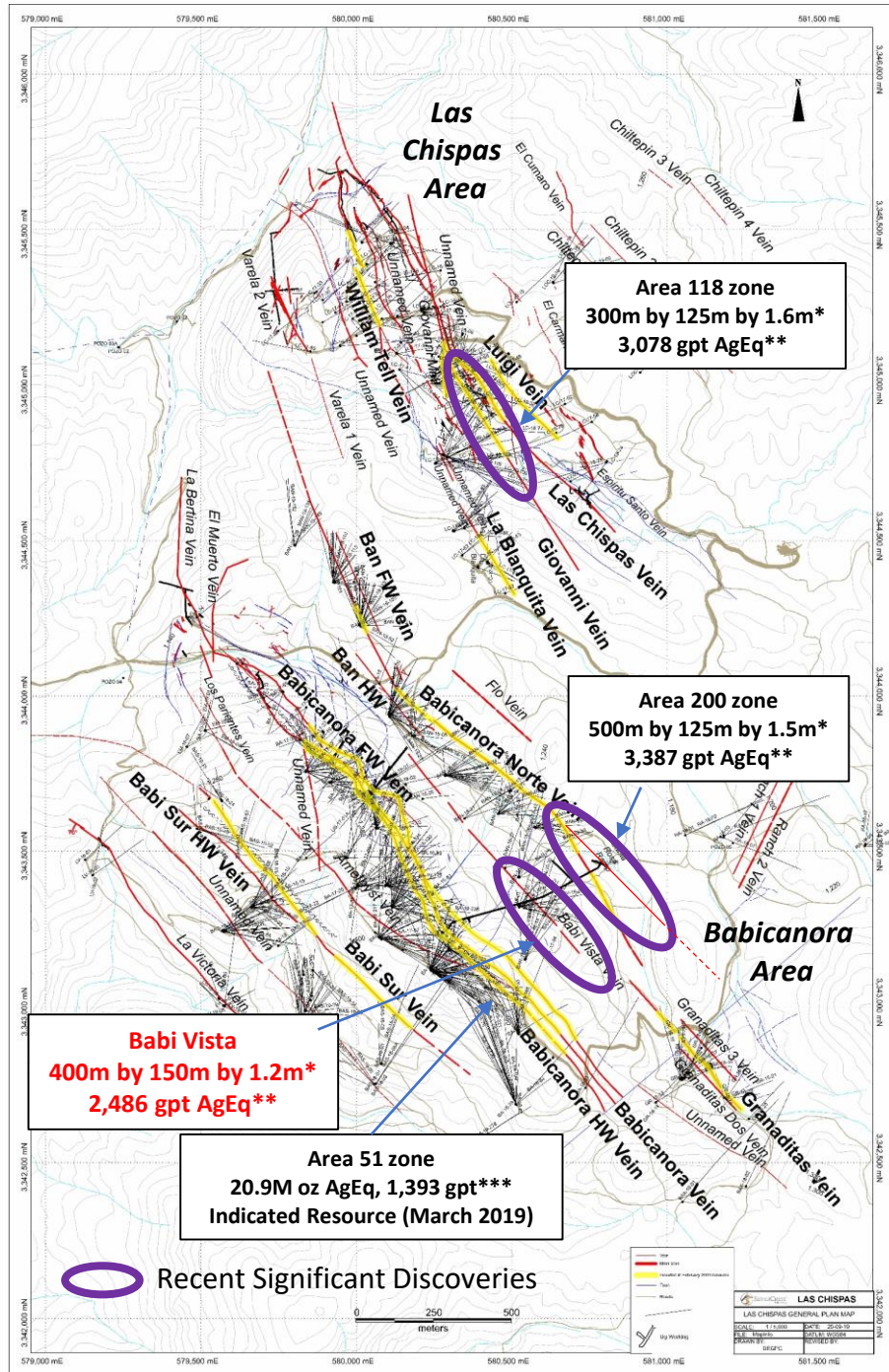
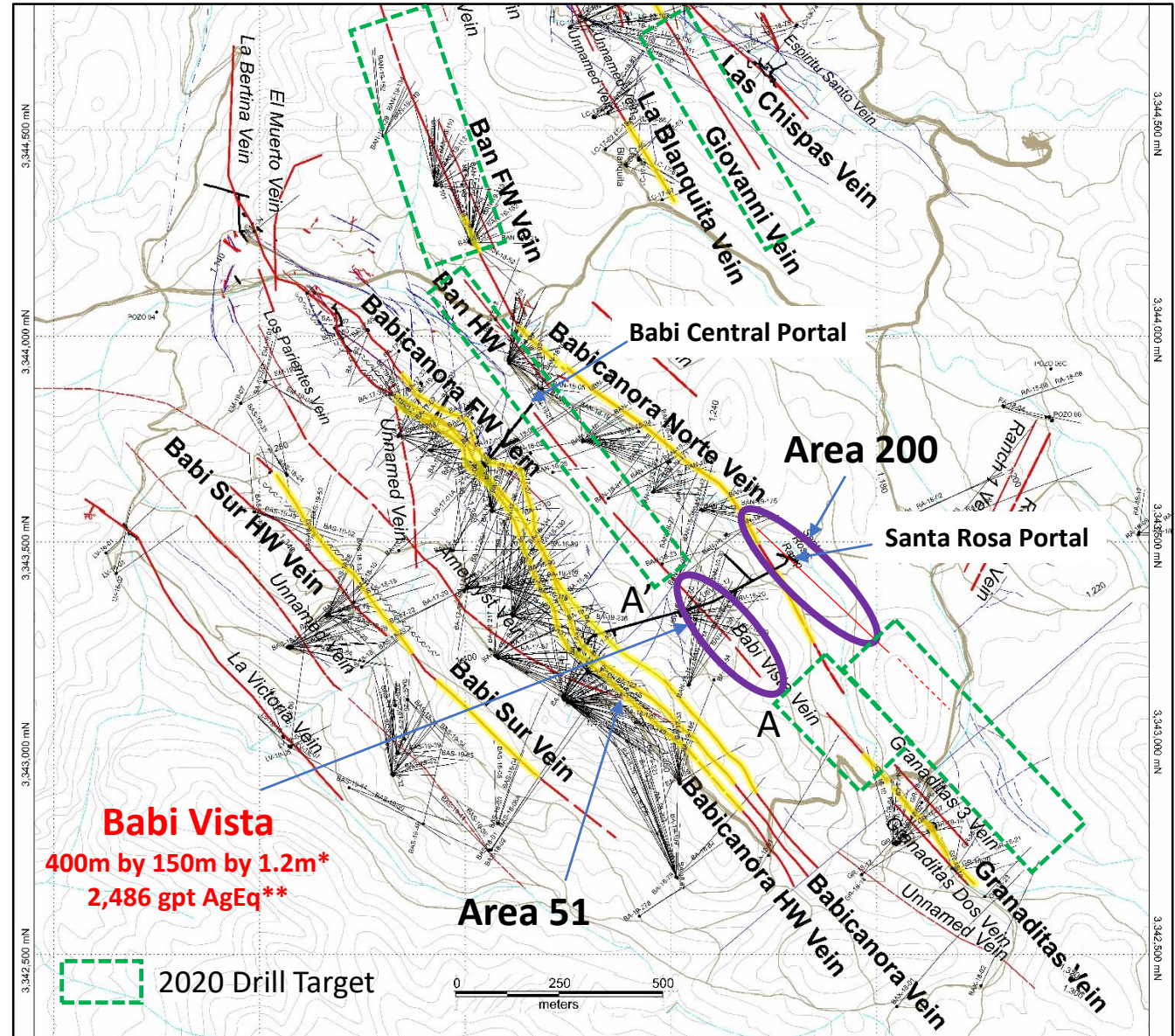


# Las Chispas District Plan Map



# Babicanora Area Plan Map - March 2020



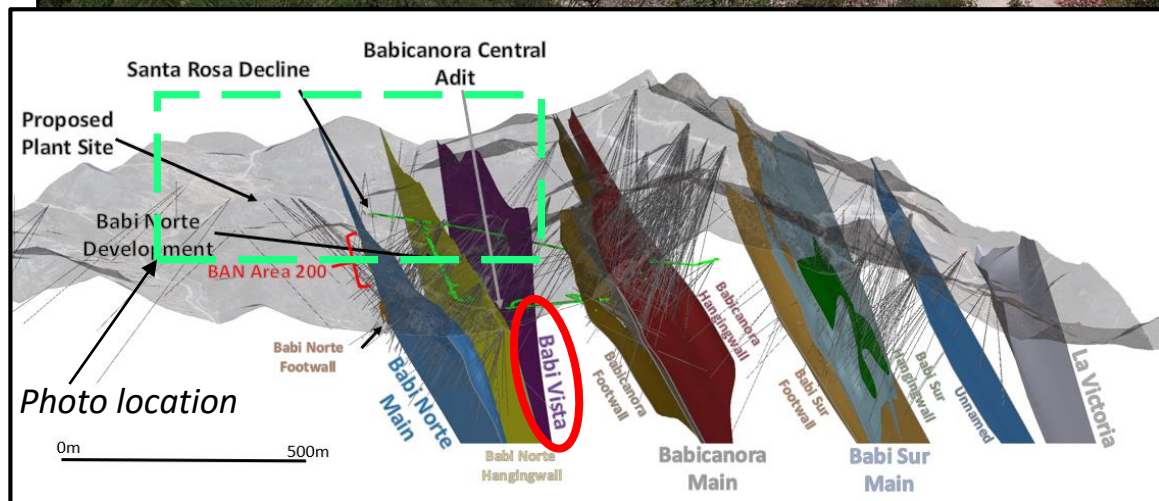
\*High-grade footprint, vein strike length by height by est. true width, refer to news releases Feb. 25, 2019, Nov. 14, 2019, Nov. 21, 2019, and Feb. 18, 2020.

\*\*AgEq based on 75 (Ag):1 (Au) calculated using long-term silver and gold prices of US\$17.00 per ounce silver and US\$1,225 per ounce gold, with average metallurgical recoveries of 90% silver and 95% gold.

\*\*\*466,000 tonnes at 7.90 gpt Au and 801 gpt Ag from March 2019 Technical Report .

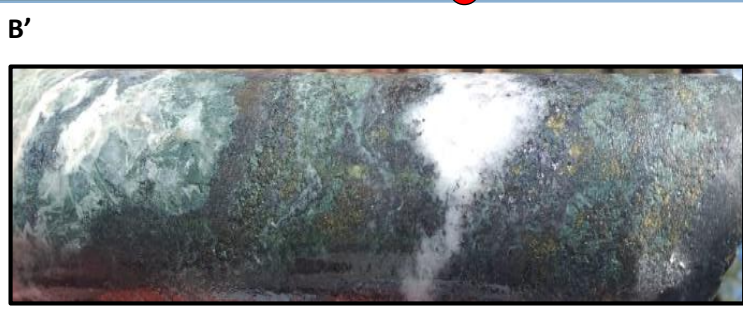
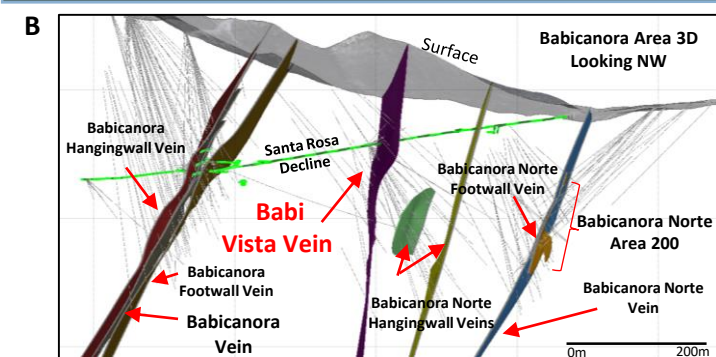
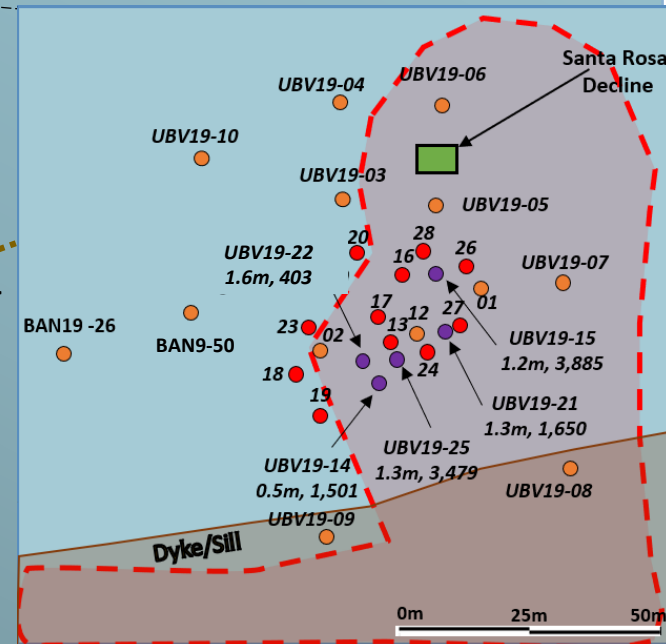
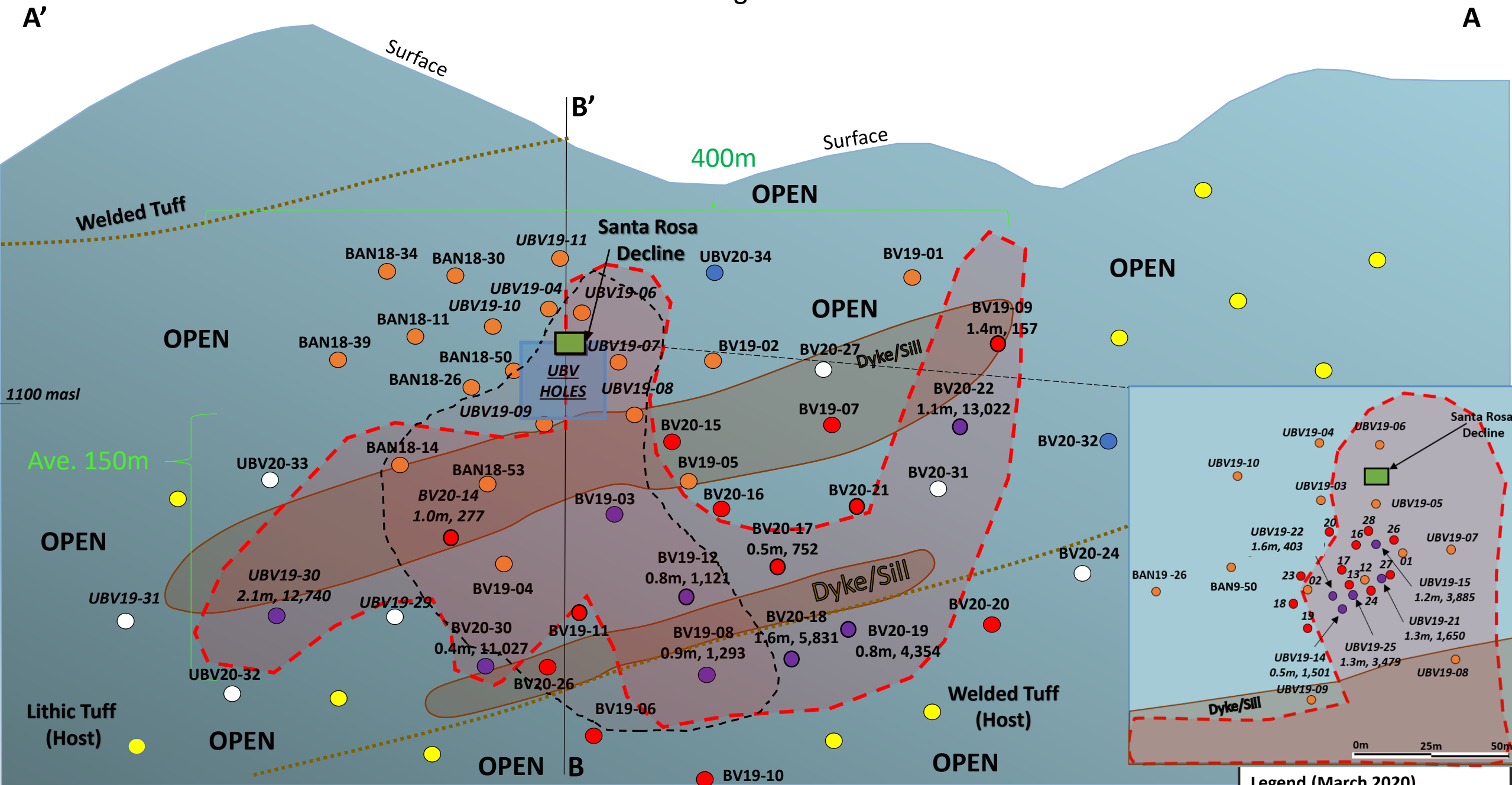


Babicanora Area, Looking Southeast





# Long Section (Inclined) of Babi Vista Vein Looking Southwest



**UBV19-30: 0.4m @ 425 gpt Au and 34,566.0 gpt Ag, or 66,441 gpt AgEq\***

\*AgEq based on 75 (Ag):1 (Au) calculated using long-term silver and gold prices of US\$17.00 per ounce silver and US\$1,225 per ounce gold, with average metallurgical recoveries of 90% silver and 95% gold.

Notes: NR = this news release  
Holes BV20-23, 25, 26 and 28 are drilled off-section

**Legend (March 2020)**

- Current NR Reported DH
- Currently Drilling
- Proposed DH
- Assays Pending
- Completed DH Pierce pt.
- >1000 gpt AgEq, NR & Total
- ⬡ High-Grade Footprint
- ⬡ Previous H-G Footprint
- ⬡ Underground Workings

Drill hole #  
True Thickness, gpt AgEq\*

All information is approximate.